

MISSISSIPPI COAST COLISEUM VIP SPACE DESIGN GUIDE

THE LOCKER ROOM

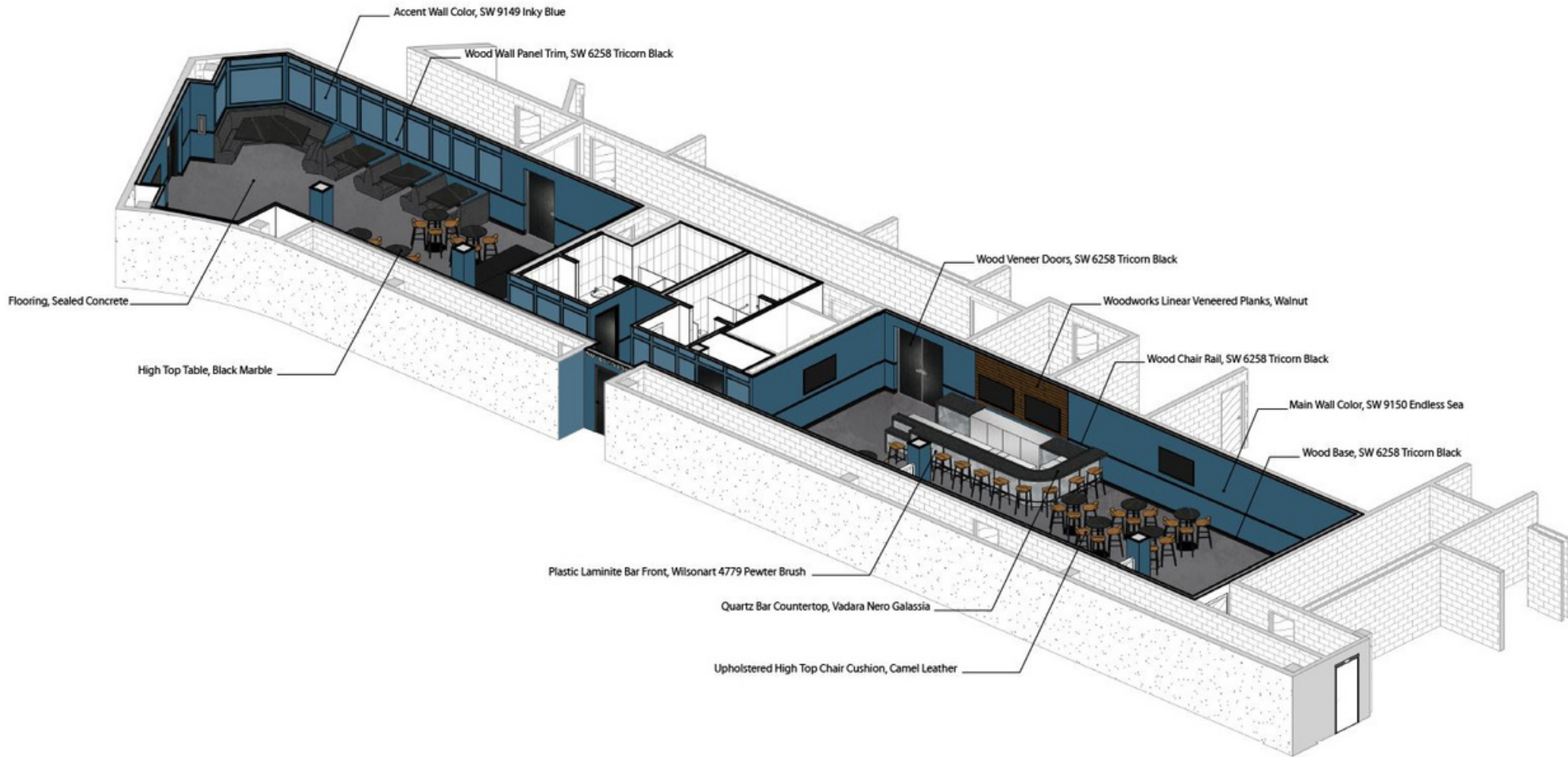
SPACE RENDERING - WITH PROPOSED DESIGN ELEMENTS

MODIFICATIONS TO BE MADE AS OF 8/3/20:

+ BOOTH AREA BEING ELIMINATED AND REPLACED WITH SOFT SEATING LOUNGE AREA

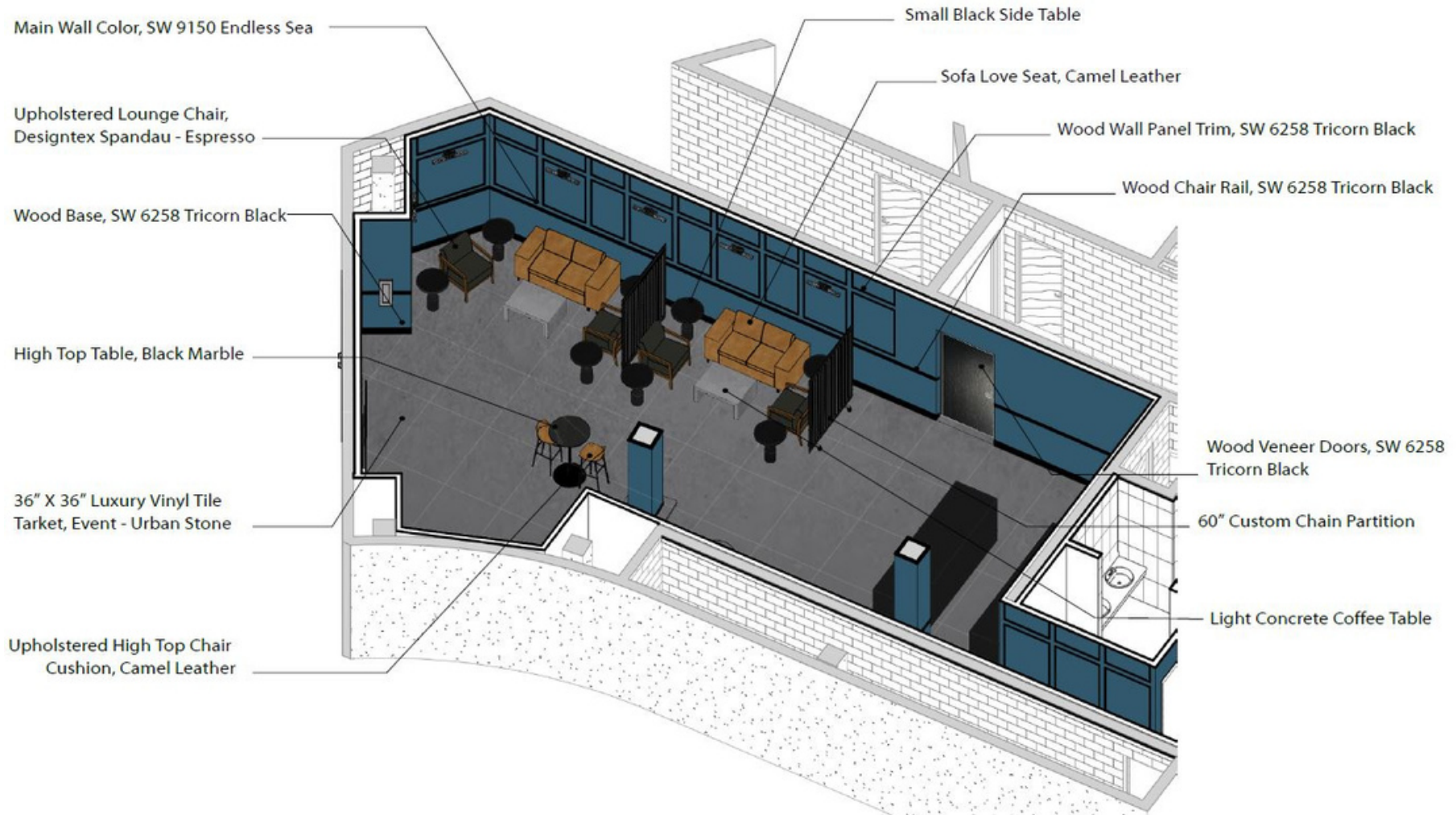
+ QUANTITIES/ SIZE & PLACEMENT OF TABLES & CHAIRS

+ UPDATED RENDERING COMING SOON



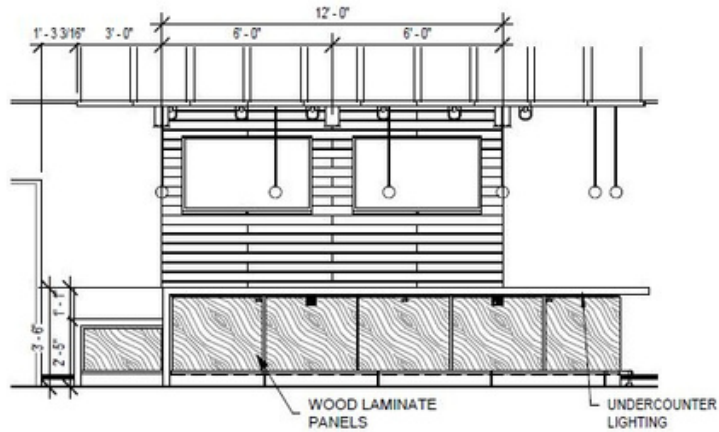
UPDATED SPACE RENDERING

ACTUAL QUANTITIES AND PLACEMENT OF FURNITURE SELECTIONS, INDICATED ON FLOOR PLANS. RENDERING SERVES AS INDICATION OF FINISHES & COLORS AS MAIN FOCUS

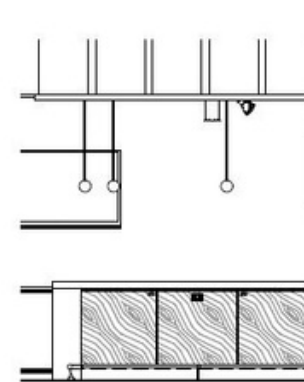


UPDATED SPACE RENDERING

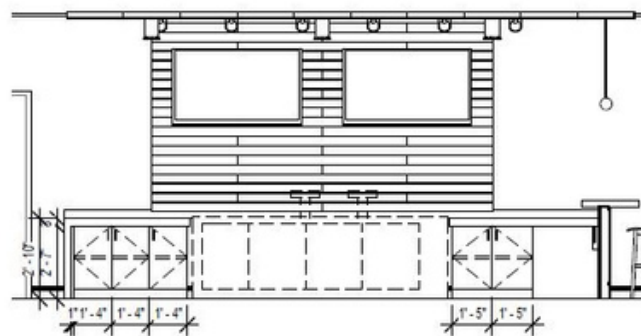
WORKING TO GET SHELVES LINED WITH SPIRIT BOTTLES ALONG BOTH SIDES OF THE BAR
EITHER MOUNTED TO WALL
OR FREESTANDING SHELVING UNITS ON TOP OF COUNTER SURFACE, FLANKING THE TV'S ON THE BACK WALL
PRICING ESTIMATE TBD
ACTUAL FINISH SELECTIONS TBD



① LOUNGE 2 BAR - SOUTH ELEVATION
1/4" = 1'-0"



② LOUNGE 2 BAR - WEST ELEVATION
1/4" = 1'-0"



③ LOUNGE 2 BAR - MILLWORK ELEVATION
1/4" = 1'-0"



④ 3D View - Bar lounge 2

MAIN BAR



MAIN BAR



MAIN BAR EQUIPMENT - TRIMARK

1 ea DRAFT BEER COOLER



Perlick Corporation Model No. DDS108
Direct Draw Draft Beer Dispenser, four-section, 108"W, self-contained refrigeration, holds (5) half barrels & (1) quarter barrel (LESS TAPPING), 33-40°F temperature range, (4) solid doors, digital thermostat, front vented, automatic defrost & evaporator condensate, automatic defrost & condensate evaporator, includes floor drain, stainless steel top, ends & back exterior, 1/4 HP, R290 Hydrocarbon refrigerant, NSF, cULus

*****EXTERIOR OF DRAFT BEER COOLER TO BE IN BLACK FINISH*****

2 ea DRAINBOARD



Perlick Corporation Model No. TSD24
TSD Series Underbar Drainboard, 24"W x 24"D, embossed top, 6"H back splash, 6" rear deck, stainless steel legs with adjustable thermoplastic feet, stainless steel construction, NSF

1 ea UNDERBAR SINK UNITS



Perlick Corporation Model No. TSD53C
TSD Series Underbar Sink Unit, three compartment, 60"W x 24"D, 6"H back splash, 10" wide x 14" front-to-back x 9-1/4" deep compartments, 12" embossed drainboards on left & right, 4" OC deck mount faucet holes, apron on front & sides, 5-1/2" rear deck, sound-deadened underside, includes 1-1/2" drains & 8-1/2" removable overflow standpipes, stainless steel construction, stainless steel legs with adjustable thermoplastic feet, NSF

2 ea ICE BIN



Perlick Corporation Model No. TS24IC10
TS Series Underbar Ice Bin/Cocktail Unit, modular with cold plate, 24"W x 18-9/16"D, approximately 50-lb. ice capacity, 10-circuit aluminum cold plate concealed under bin liner, 6"H back splash with 1" return at top, ABS plastic top ledge, 10-3/4" deep stainless steel ice bin, stainless steel front & sides, galvanized steel back & bottom, 1/2" NPS male drain, 1-5/8" tubular stainless steel legs with 1" adjustable thermoplastic feet, NSF

1 ea HAND SINK



Perlick Corporation Model No. TS12HSN
TS Series Underbar Hand Sink Unit, free standing, 12"W x 22-1/4"D, 6" back splash, 10" wide x 14" front-to-back x 9-1/4" deep sink, 4" OC splash mount faucet holes, 16 oz. pump soap dispenser, C-fold paper towel dispenser on front apron, sound-deadened underside, (1) 8-1/2" standpipe, 1-1/2" NPS male drain, stainless steel construction, stainless steel legs with adjustable thermoplastic feet, NSF

2 ea BOTTLE STORAGE UNIT



Perlick Corporation Model No. TS12LS
TS Series Underbar Liquor Bottle Step Display, 12"W x 24"D, 3"H steps, stainless steel construction, stainless steel legs with adjustable thermoplastic feet, NSF

1 ea BLENDER STATION

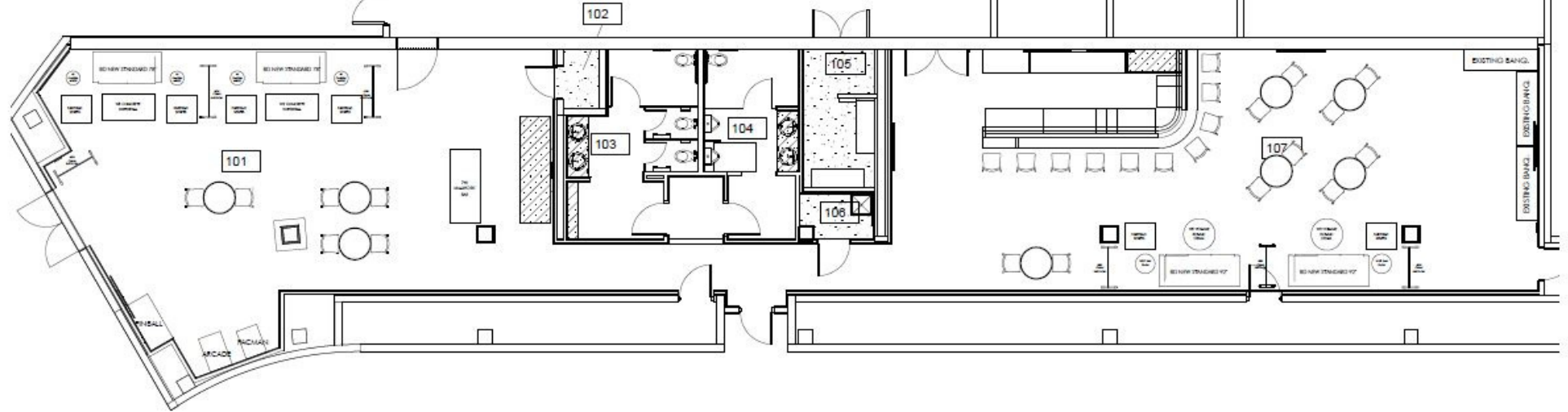


Perlick Corporation Model No. TS12BLW
TS Series Underbar Blender Station, with dump sink, 12"W, 6" back splash, 9-5/8" wide x 10-5/8" front-to-back x 6" deep, 4" OC splash mount faucet holes, recessed blender shelf with access hole & duplex outlet (not installed), stainless steel construction, stainless steel legs with adjustable thermoplastic feet, NSF

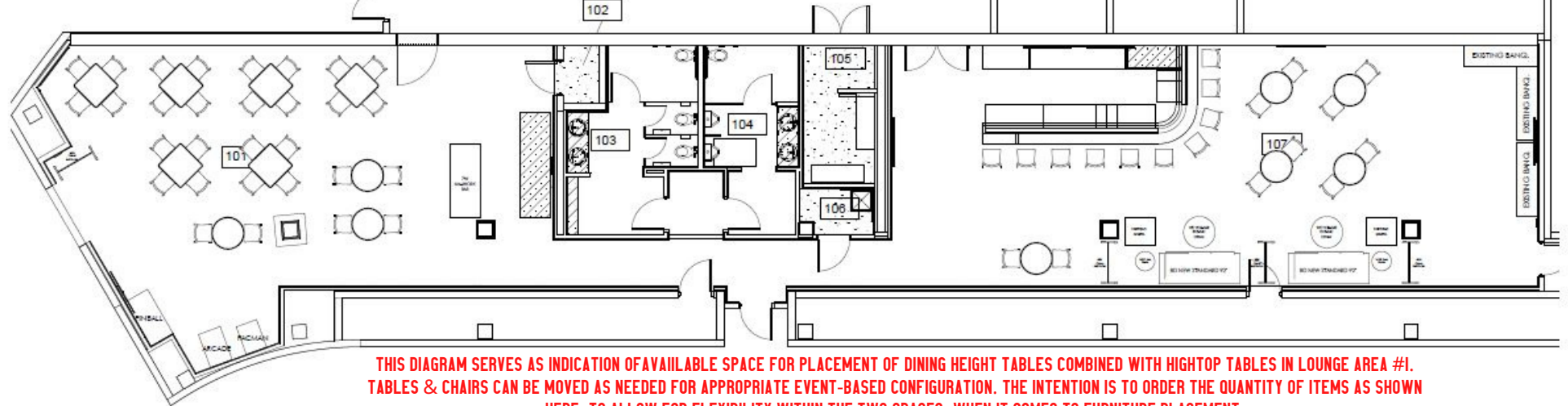
FLOOR PLANS - UPDATED AS OF 8/26/20

BILOXI VIP SPACE

SPACE ACTIVATION #1 - WITH SOFT LOUNGE SEATING



SPACE ACTIVATION #2 - WITH DINING HEIGHT TABLES



THIS DIAGRAM SERVES AS INDICATION OF AVAILABLE SPACE FOR PLACEMENT OF DINING HEIGHT TABLES COMBINED WITH HIGHTOP TABLES IN LOUNGE AREA #1. TABLES & CHAIRS CAN BE MOVED AS NEEDED FOR APPROPRIATE EVENT-BASED CONFIGURATION. THE INTENTION IS TO ORDER THE QUANTITY OF ITEMS AS SHOWN HERE, TO ALLOW FOR FLEXIBILITY WITHIN THE TWO SPACES, WHEN IT COMES TO FURNITURE PLACEMENT.

PROPOSED DESIGN ELEMENTS & FINISHES

BAR COUNTERTOP

vadara

Nero Galassia V001 - V001 Collection



CEILING/WALL WOOD PLANKS



CEILING WOOD OPEN CELL



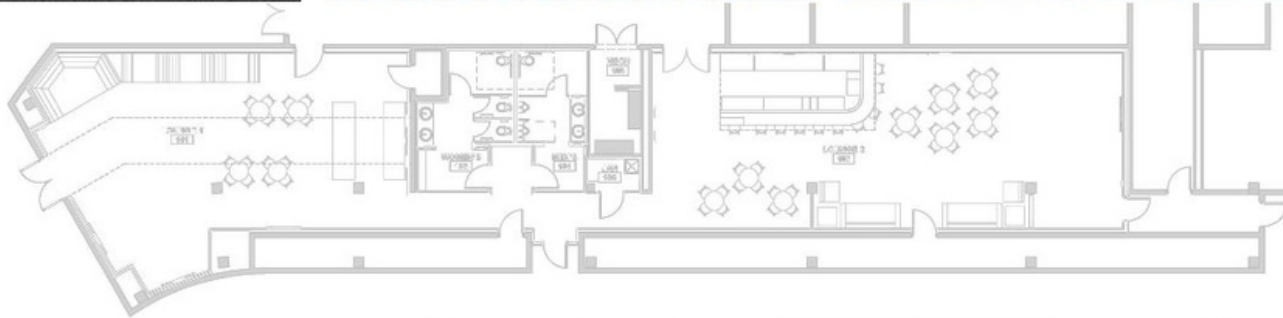
PAINT

SW 9150
Endless Sea
Interior / Exterior
Location Number: 223-C7

~~SW 9140~~
~~Inky Blue~~
Interior / Exterior
Location Number: 223-C6

SW 6258
Tricorn Black
Interior / Exterior
Location Number: 251-C1

SW 7004
Snowbound
Interior / Exterior
Location Number: 256-C2



WOOD DOORS



LIGHTING

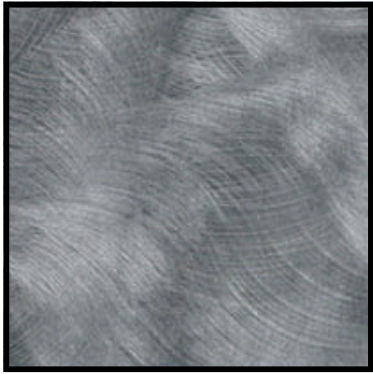


COLISEUM VIP AREA RENOVATIONS

MISSISSIPPI COAST COLISEUM & CONV CENTER

The renderings shown represent an artist's concept only and may vary in detail, color, scope, and design in the final Construction Documents. Architect/Engineer reserves the right to modify the design as required and shall not be held liable to provide any content shown herein.

ADDITIONAL FINISHES



**EXTERIOR OF BAR:
WILSONART
LAMINATE
PEWTER BRUSH**



**CEILING/ WALL PLANKS:
ARMSTRONG WOOD WORKS
LINEAR VENEERED PLANKS
NATURAL VARIATIONS - WALNUT**

**FINISHES DO NOT DIGITALLY SHOW
AS SAME COLOR**

**ACTUAL FINISH SAMPLES
PROVE A VERY CLOSE COLOR MATCH**



**GALLERY PORTABLE BAR
AND CHEF TABLE FINISHES:
WILSONART LAMINATE
WALNUT HEIGHTS**



**FLOORING:
CONCRETE
FINISH/ GLOSS TBD**



**HIGH-TOP TABLE SURFACES
SURFACE TYPE TBD
BLACK MARBLE DESIGN**

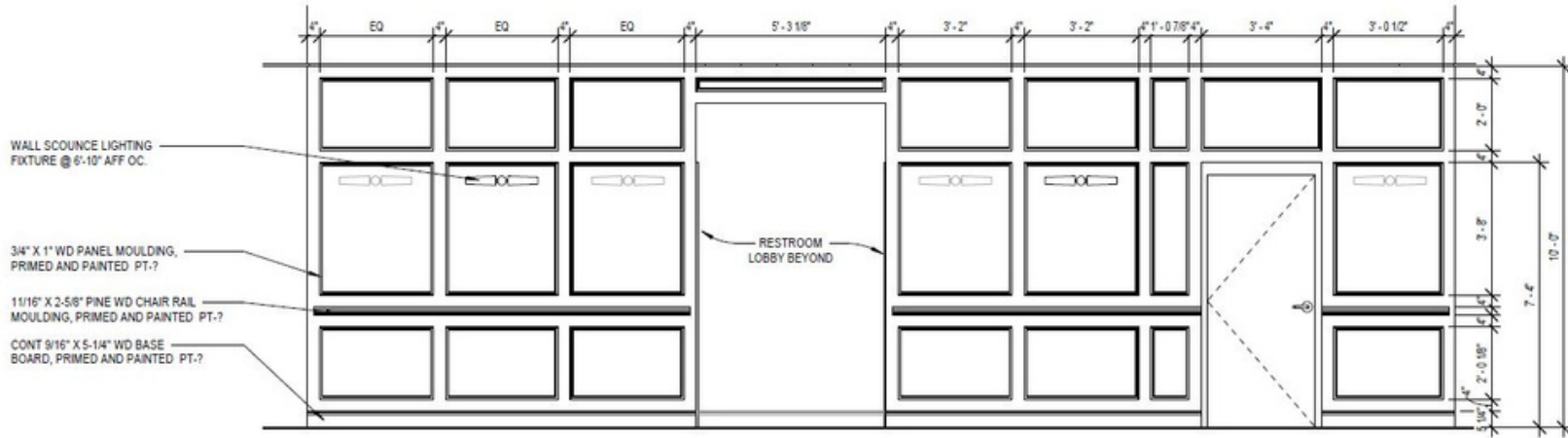


**FURNITURE UPHOLSTERY:
+ BARSTOOLS
+ SOFAS
CAMEL COLORED LEATHER
ACTUAL PRODUCT SELECTION TBD**

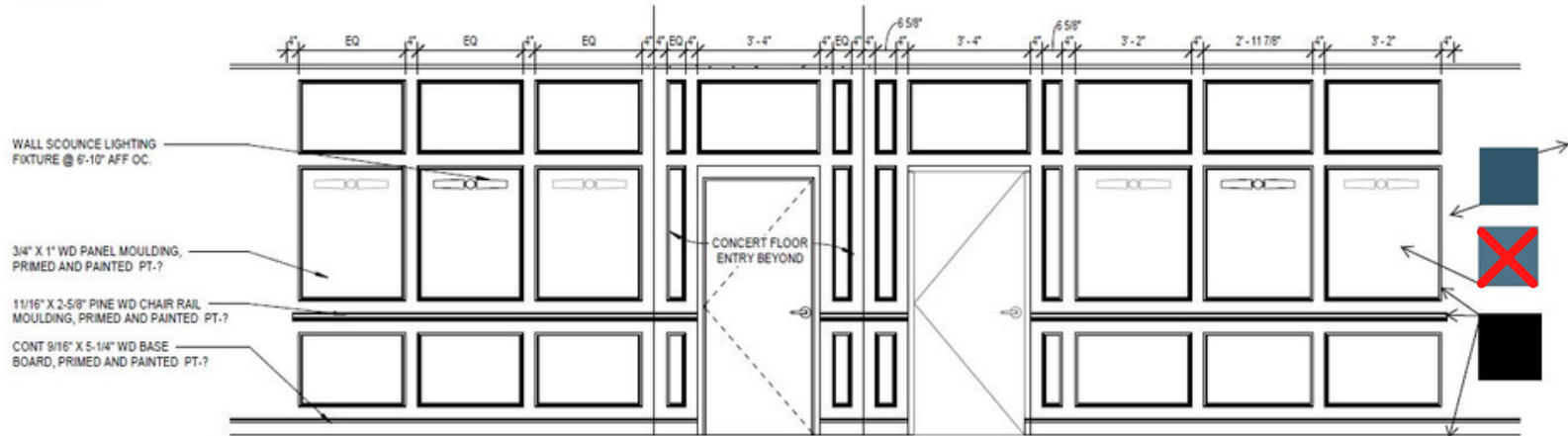


**FURNITURE UPHOLSTERY:
+ LOUNGE CHAIRS
CHARCOAL COLORED LEATHER
ACTUAL PRODCUT SELECTION TBD**

WALL ELEVATION - WAINSCOTING DESIGN FEATURE

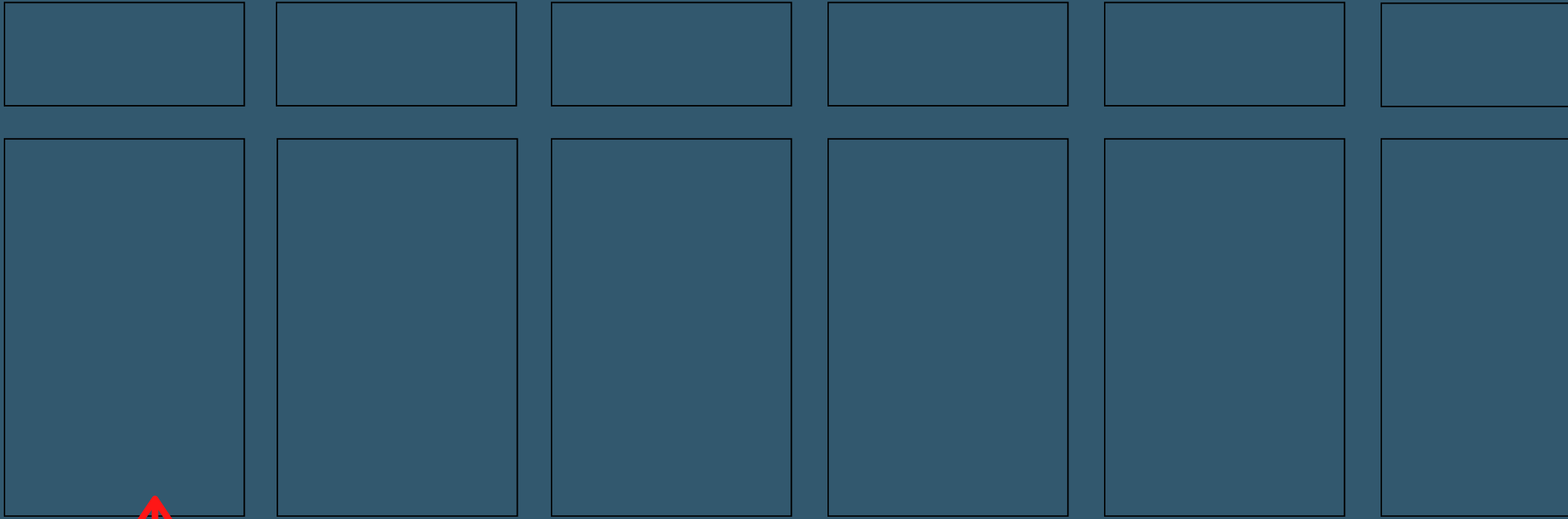


① CORRIDOR - NORTH ELEVATION
3/8" = 1'-0"



② CORRIDOR - SOUTH ELEVATION
3/8" = 1'-0"

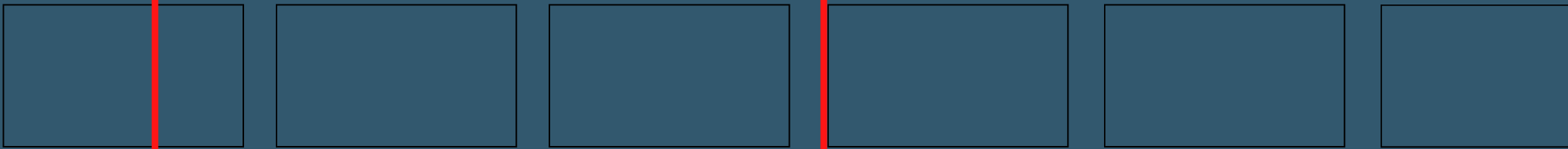
WAINSCOTING - WITH SELECTED PAINT COLORS



SW ENDLESS SEA



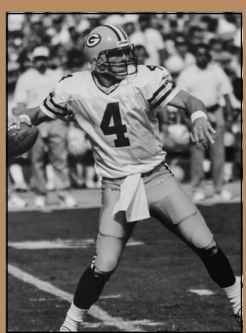
SW TRICORN BLACK



WAINSCOTING INSTALLATION



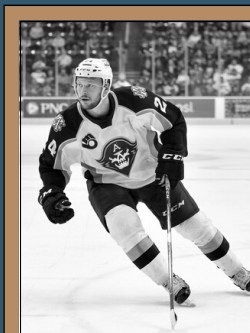
"HALL OF FAME" - FRAMED & ILLUMINATED SPORTS HISTORY PHOTOGRAPHY



BRETT FARVE



SPENCER HAYWOOD



MATHIEU OLIVIER

"HALL OF FAME" - FRAMED & ILLUMINATED SPORTS HISTORY PHOTOGRAPHY

SELECTED WALL MOUNTED
SCONCE

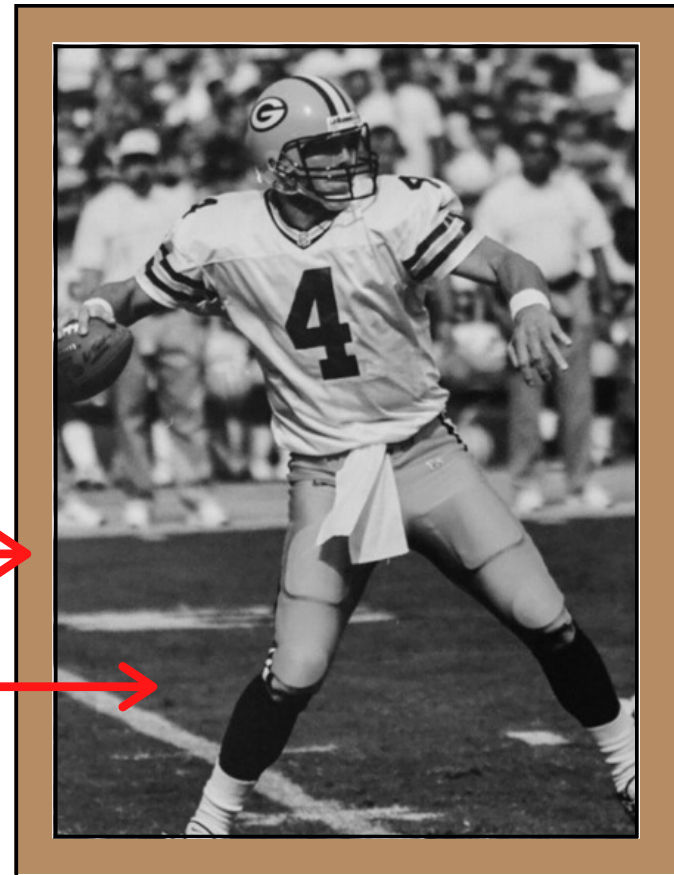


BRASS/ GOLD FRAMES - ACTUAL FINISH SELECTION TBD

ACTUAL ARTWORK:
ATHLETES & ARTISTS IMAGES TO BE FEATURED TBD

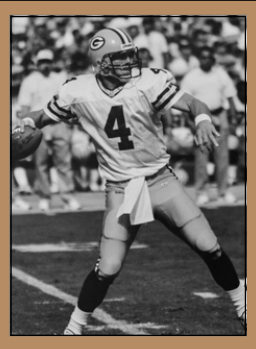
PHOTOGRAPHY PLAQUE WITH "LOCKER ROOM" THEME/
ATHLETE OR ARTIST NAME REPRESENTED

FRAMING & PLAQUE VENDOR: NEGROTTOS GALLERY
MICHELLE TO WORK WITH VENDOR/ MANAGE PROJECT
& BILL LEVY FOR ACTUAL COST

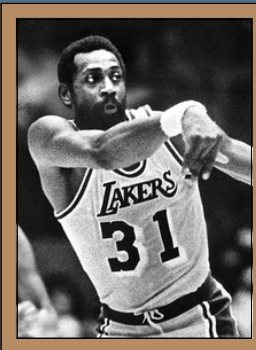


LOCKER #4
BRETT FARVE

SPACE ELEVATION - WITH PROPOSED BOOTH DETAILS



BRETT FARVE



SPENCER HAYWOOD



BUILT-IN BOOTHS WILL NO LONGER BE FEATURED WITHIN VIP SPACE
WILL BE REPLACED WITH SOFT SEATING

CUSTOM BOOTHS - FINISH AND MATERIAL SELECTIONS

IMAGES IN THIS LINE ARE THE SAME FINISHES AS BELOW EXCEPT FOR CHAIN DETAIL - CHAIN REPRESENTED HERE WITH A MORE RUST/ BRASS FINISH



IMAGES IN THIS LINE ARE THE SAME FINISHES AS ABOVE EXCEPT FOR CHAIN DETAIL - CHAIN REPRESENTED HERE WITH A MORE SILVER/ BRUSHED METAL OR BLACK FINISH



CHAIN SPACE DIVIDERS - LOUNGE AREAS

NEED A TOTAL OF 6 DIVIDERS:

- + THREE THAT ARE 5' WIDE X 7' TALL
- + THREE THAT ARE 4' WIDE X 7' TALL

HANGING CHAIN:

- + SECURED TO TOP AND BOTTOM OF FRAME
- + SIZE/TYPE OF CHAIN TBD (CUSTOM FABRICATOR'S CHOICE)
- + CHAIN FINISH: BRUSHED METAL/ SILVER

WEIGHTED METAL BASE:

- + TO STEADY STRUCTURE
- + BLACK FINISH
- + CUSTOM FABRICATOR'S CHOICE ON ENGINEERING
- + CUSTOM FABRICATOR'S CHOICE ON DIMENSIONS

DIMENSIONS:

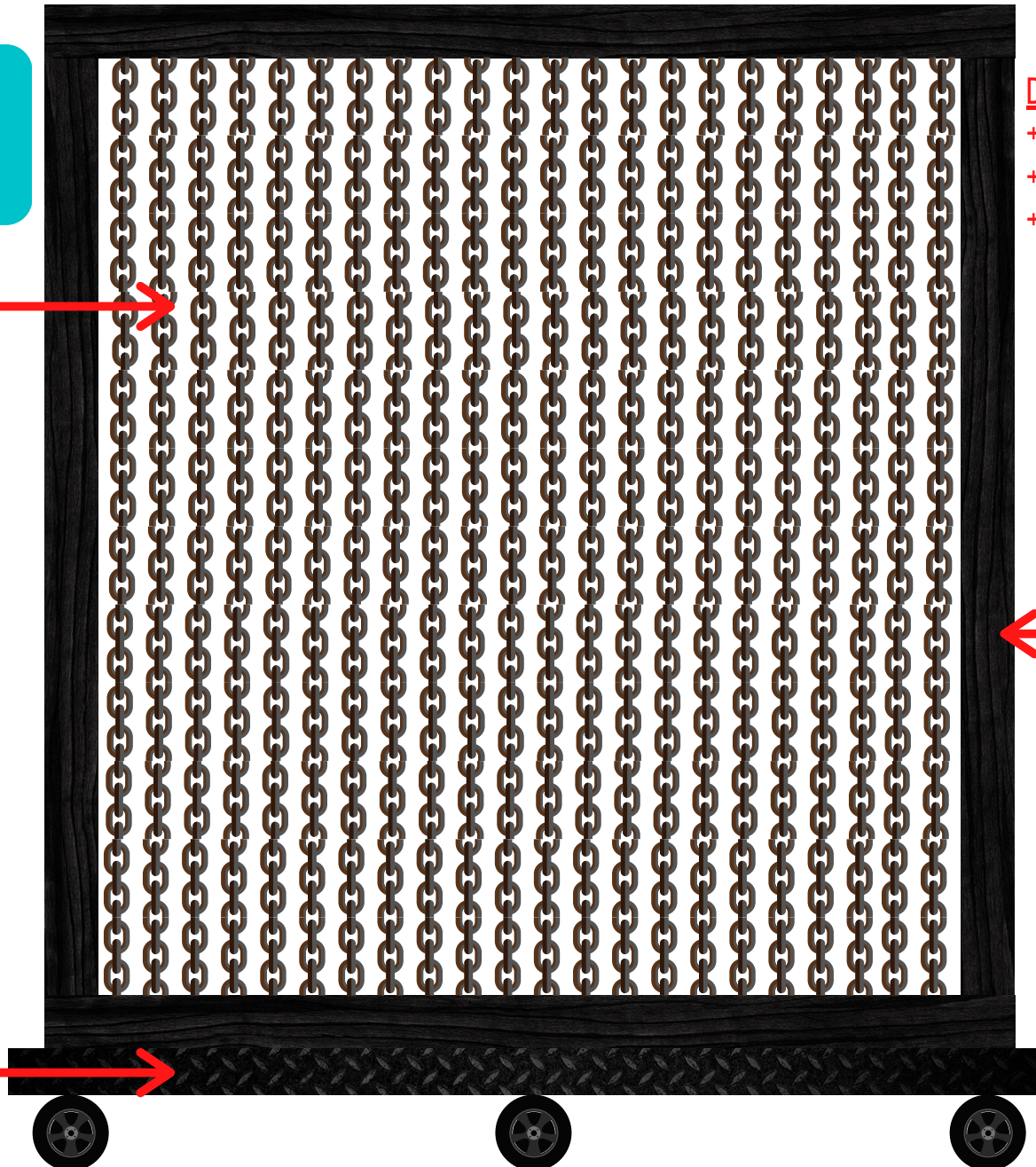
- + HEIGHT: 82" (MAX HEIGHT)
- + LENGTH: 5' (FOR 3) AND 4' (FOR 3)
- + DEPTH: 12" - 18" (TBD)

WOOD FRAMING SYSTEM:

- + BLACK STAINED WOOD
- + TREATED/ COATED FINISH
- + DIMENSIONS OF WOOD TBD (CUSTOM FABRICATOR'S CHOICE)

LOCKING CASTERS FOR MOBILITY:

- + EXPOSED (CUSTOM FABRICATOR'S CHOICE)
- + QUANTITY OF NECESSARY CASTERS TBD



CHEF TABLES - CORE CONCEPTS - QUANTITY OF 2 FOR ORDER

FINISHES



Wilsonart
Walnut Heights 7965K-12
Soft Grain Finish
Tabletop Surface



Blackened Cold
Rolled Steel
Hardware & Accents



4" Casters with Blackened Hardware
and Gray Polyurethane Tread

DIMENSIONS
84"L X 31.5"W X 30"H



4 Tables Nested



FEATURES

- 2x 20 Amp Multi Power Strip with 9' Cord and 10 Outlets
- Custom Square Grommet Holes with Matching Laminate Plug & Lanyard
- Magnets for Table Nesting

Custom Square Grommet
Holes with Matching
Laminate Plug & Lanyard



2x 20 Amp Multi Power Strip with
9' Cord and 10 Outlets



"T" Fold Table
Cable Management

080420ET

© 2020 Core Concepts Inc. All Rights Reserved.
This material contains proprietary information,
use and disclosure is prohibited.

CHEF TABLES - CORE CONCEPTS - QUANTITY OF 2 FOR ORDER

FINISHES



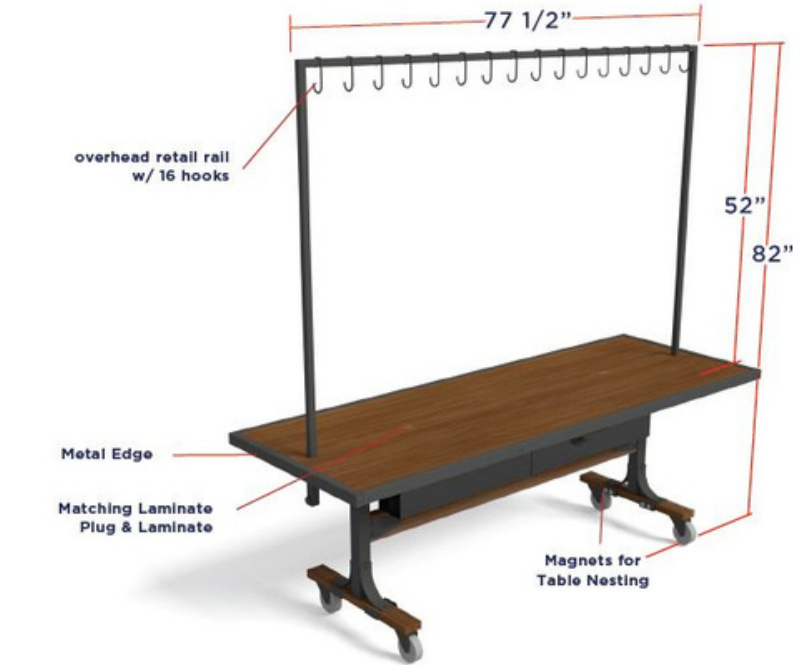
Wilsonart
Walnut Heights 7965K-12
Soft Grain Finish
Tabletop Surface



Blackened Cold
Rolled Steel
Hardware & Accents



4" Casters with Blackened Hardware
and Gray Polyurethane Tread



"T" Fold Table
Overhead Retail Rail

080420ET

Approval Signature: _____

© 2020 Core Concepts Inc. All Rights Reserved.
This material contains proprietary information,
use and disclosure is prohibited.

PORTABLE BAR - GALLERY CARTS - 1 FULL SET FOR ORDER

**BACK BAR TO BE USED AS DISPLAY
PIECE FOR CHEF TABLE SETUPS
IN SPACE #2**

**PORTABLE BAR ARRANGEMENT
WILL HAVE BACK COOLER WITH
FINISHED COUNTERTOP AND LAMINATE
SIDES FOR A FINISHED LOOK**



PORTABLE BAR - GALLERY CARTS - QUANTITY OF 1 FOR ORDER

PORTABLE BAR ARRANGEMENT
WILL HAVE BACK COOLER WITH
FINISHED COUNTERTOP AND LAMINATE
SIDES FOR A FINISHED LOOK

SAME BLACK COUNTERTOP AS BAR
SAME WOOD LAMINATE AS BAR

THE COOLER DOORS WILL BE EXPOSED
AND COATED IN BLACK FINISH VS.
STAINLESS STEEL



ITEM #4 - COOLER CART

NOTES:
1. VERIFY POWER AVAILABLE ON SITE.

APPROVED BY: _____ **DATE:** _____

PLAN VIEW

CUSTOMER ELEVATION:
FRONT SIDE

OPERATOR ELEVATION:
LEFT SIDE

OPERATOR ELEVATION

OPERATOR ELEVATION:
RIGHT SIDE

LEGEND:
1. LG BLACK PEARL SOLID SURFACE COUNTERTOP
2. MELBONK BODY CONSTRUCTION WITH FINISHED IN-
WILSONART WILSONIT HEIGHTS #7958K-12 LAMINATE WITH
SOFT-TAN-FINISH ON ALL EXPOSED SIDES
3. HEAVY DUTY 4" CASTERS, TWO (2) RIGID AND TWO (2)
SWIVEL WITH BRAKE
4. BLACK COLORED CORNER TRIM AROUND ALL EDGES OF
CART
5. THE WICK TO EXTEND DOWN 2" ABOVE FLOOR

EQUIPMENT SUPPLIED BY CHALICE:
6. 19.92 CU. FT. REFRIGERATED BACK BAR COOLER WITH
THREE (3) SLIDING AND LOCKING DOORS
(DISKENCE-AN #4872AC-1-03)
120 VOLT / 3.1 AMPS / SINGLE PHASE

ELECTRICAL DATA - SUITS FOR INDOOR USE:
120 VOLT / 15 AMP / SINGLE PHASE
CART TO HAVE A 10' LONG CORD WITH NEMA 5-15P PLUG

REV	REVISION	DESCRIPTION	DATE
1	CHANGED LAMINATE EXTERIORS		08-03-20
2			
3			
4			

Levy - Mississippi Coast CC

Cooler Cart

DATE: 06-25-20 JOB NO. 104411 DWG. NO. 01
DRAWN BY: CAG

REVISION LIST: 1

ALL DIMENSIONS ARE "UNLESS SHOWN TO THE CONTRARY"
WITH NO CONSIDERATION OF LEAN BEING IN TIME.

THIS DRAWING IS THE PROPERTY OF CHALICE. IT IS NOT TO BE REPRODUCED, COPIED, OR TRANSMITTED IN ANY FORM OR BY ANY MEANS, WITHOUT THE WRITTEN CONSENT OF CHALICE.

//CONFIDENTIAL//

Gallery

QUANTITY REQUIRED: 1

CUSTOMER IS RESPONSIBLE FOR ALL HEALTH CODE APPROVALS

PORTABLE BAR - GALLERY CARTS - ACTUAL IMAGES



FURNITURE SELECTIONS FOR LOUNGE AREA #1

ALL MODERN SLING BARSTOOLS AND
DINING HEIGHT CHAIRS IN CAMEL
+ BARSTOOLS (6)
iHT



HIGH-TOP TABLES: ROUND (3)
DINING HEIGHT TABLES: SQUARE (6)
MARBLE SURFACES
BLACK PEDESTAL BASES



INDUSTRY WEST
CALDERA SIDE TABLE (4)

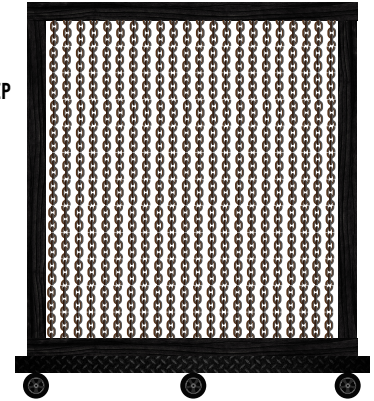


78" BLU DOT NEW STANDARD SOFA (2)



CONCRETE WATERFALL COFFEE TABLE (2)

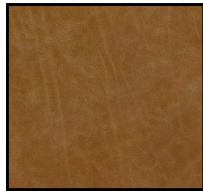
CUSTOM CHAIN
PARTITION
(MOBILE)
5' LONG X 7' TALL X 18" DEEP
QUANTITY OF (3)



FAIRFIELD CHAIR
SPARTA OCCASIONAL CHAIR (4)



SUGGESTED FINISHES FOR ABOVE FURNITURE SELECTIONS



UPHOLSTERY
BLU DOT TOFFEE- SOFA
MAHARAM HUE SORGHUM - BARSTOOLS & DINING CHAIRS



LOUNGE CHAIR UPHOLSTERY
DESIGNTEX
SPANDAU - ESPRESSO



COFFEE TABLE FINISH
LIGHT CONCRETE

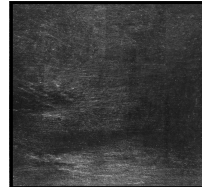


TABLE & CHAIR FRAMING/ SOFA LEGS
SHADES OF DARKER/ BLACK METALS

FINISHES BEING REPRESENTED IN SURROUNDING AREAS



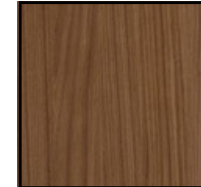
PAINT ON WALLS



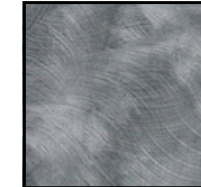
FLOORING
CONCRETE



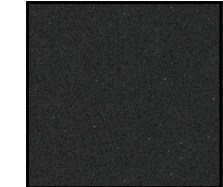
HIGH-TOP TABLES &
DINING HEIGHT TABLES
BLACK MARBLE



CEILING/ STATEMENT BAR PANELING
ARMSTRONG NATURAL WALNUT



STATEMENT BAR EXTERIOR
WILSONART PEWTER BRUSH



STATEMENT BAR COUNTER
VADARA - NERO GALASSIA

FURNITURE SELECTIONS FOR LOUNGE AREA #2

ALL MODERN SLING BARSTOOLS AND
DINING HEIGHT CHAIRS IN CAMEL
+ BARSTOOLS (6)
+ DINING HEIGHT CHAIRS (24)



HIGH-TOP TABLES: ROUND (5)



WEST ELM PRISM
END TABLE (2)



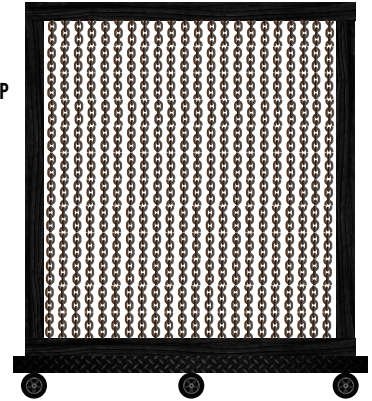
92" BLU DOT NEW STANDARD SOFA (2)



WEST ELM DRUM COFFEE TABLE (2)



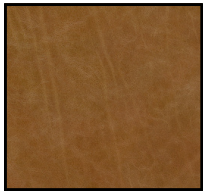
CUSTOM CHAIN
PARTITION
(MOBILE)
4' LONG X 7' TALL X 18" DEEP
QUANTITY OF (3)



FAIRFIELD CHAIR
SPARTA OCCASIONAL CHAIR (2)



SUGGESTED FINISHES FOR ABOVE FURNITURE SELECTIONS



UPHOLSTERY
BLU DOT TOFFEE- SOFA
MAHARMAM HUE SORGHUM - BARSTOOLS & DINING CHAIRS



LOUNGE CHAIR UPHOLSTERY
DESIGNTEX
SPANDAU - ESPRESSO



COFFEE TABLE & SIDE TABLE FINISH
LIGHT CONCRETE

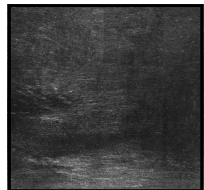


TABLE & CHAIR FRAMING/ SOFA LEGS
SHADES OF DARKER/ BLACK METALS

FINISHES BEING REPRESENTED IN SURROUNDING AREAS



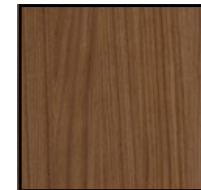
PAINT ON WALLS



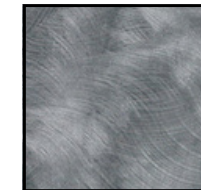
FLOORING
CONCRETE



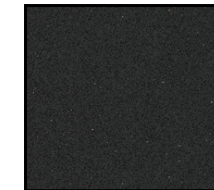
HIGH-TOP TABLES
BLACK MARBLE



CEILING/ STATEMENT BAR PANELING
ARMSTRONG NATURAL WALNUT



STATEMENT BAR EXTERIOR
WILSONART PEWTER BRUSH



STATEMENT BAR COUNTER
VADARA - NERO GALASSIA

FURNITURE SELECTIONS - INSTALLED



FURNITURE SELECTIONS - INSTALLED



FURNITURE SELECTIONS - INSTALLED



FURNITURE SELECTIONS - INSTALLED



GAMING SYSTEMS

LOCAL VENDORS:
 PINBALL MACHINE: GULF COAST PINBALL
 GOLDEN TEE & GALAGA: CHICAGO GAMING COMPANY

1

AEROSMITH PINBALL



DIMENSIONS:
 29" W
 58" D
 76" H

2

GOLDEN TEE AND MORE

Model 9500-3
 UPC 660762-95003-8

ARCADE LEGENDS

Arcade Legends + Golden Tee Fore! = Arcade Legends 3!

The greatest collection of Arcade Games ever amassed! The huge collection of Arcade Legends games plus all 29 award winning Golden Tee Fore! Complete courses, all in one cabinet. 130 games in total!

Custom Menu
 The custom menu sorts game titles by name, manufacturer and favorites, allowing the user to quickly navigate the 130 titles. Highlighted games are provided and the user is provided a brief tutorial once a game is selected.

Authentic Arcade Hardware
 Arcade Legends utilizes real arcade controls, including one trackball, two joysticks and fifteen buttons.

Now Includes 130 Games!

Scroll down the page for entire list of games

DIMENSIONS:
 26 1/4" W
 40" D
 67 1/2" H
 345 LBS

3

GALAGA AND MORE

Ms. Pac-Man / Galaga

Class of 1981 Arcade Size Home Edition

Model 9600
 UPC 660762-09000-2

6 Games In 1
 Ms Pac-Man and Galaga plus four hidden bonus games:

- Pac-Man
- Speedy Pac-Man
- Speedy Ms. Pac-Man
- Rapid Fire Galaga

Identical To Coin Operated Versions
 (except you get to keep your quarters)

Real arcade controls, full sized cabinet and 24" commercial arcade monitor.

Double Sided Retro Art
 Each side of the cabinet has reproduction artwork from the original iconic arcade games.

DIMENSIONS:
 24.5" W
 33.35" D
 68" H
 275 LBS

"THE LOCKER ROOM" BRANDING

PRIMARY BRANDMARK

THE LOCKER ROOM
EST. 1977

USED ON ALL MARKETING MATERIAL / MENUS & COLLATERAL
ALSO BEING ETCHED INTO VIP ENTRANCE GLASS DOORS

SECONDARY BRANDMARK

THE LOCKER ROOM

BEING USED FOR: UNIFORM EMBROIDERY, WRISTBANDS, OVERHEAD VIP ENTRANCE SIGNAGE

LEVY WILL NOT BE TRADEMARKING THE NAME. BUILDING PARTNER MAY CHOOSE TO TRADEMARK IF THEY DEEM NECESSARY

VIP SPACE ENTRANCE

LOOKING TO PROVIDE OVERHEAD SIGNAGE AND ADDITIONAL ESIGN ENHANCEMENTS TO BUILD THE EXTERIOR LOOK



ARCHITECT HAS ADDED THE STRUCTURAL MODIFICATIONS TO THEIR SCOPE OF WORK TO INCLUDE: ELECTRICAL ADDED FOR WALL MOUNTED SCONCES, SELECTED LIGHT FIXTURES, PAINTING OF THE WALL

VIP SPACE ENTRANCE - DESIGN INSPIRATION ELEVATION

- + PAINT FLUTED WALL IN DARKER SHADE - COLOR TBD
- + INSTAL OVERHEAD ACCENT SCONCE LIGHTING TO ACCENT MAIN SIGNAGE

- + INSTAL LARGE, DIMENSIONAL OVERHEAD MAIN SIGNAGE
- + MOUNT METAL 1997 "ADDRESS" TO WALL



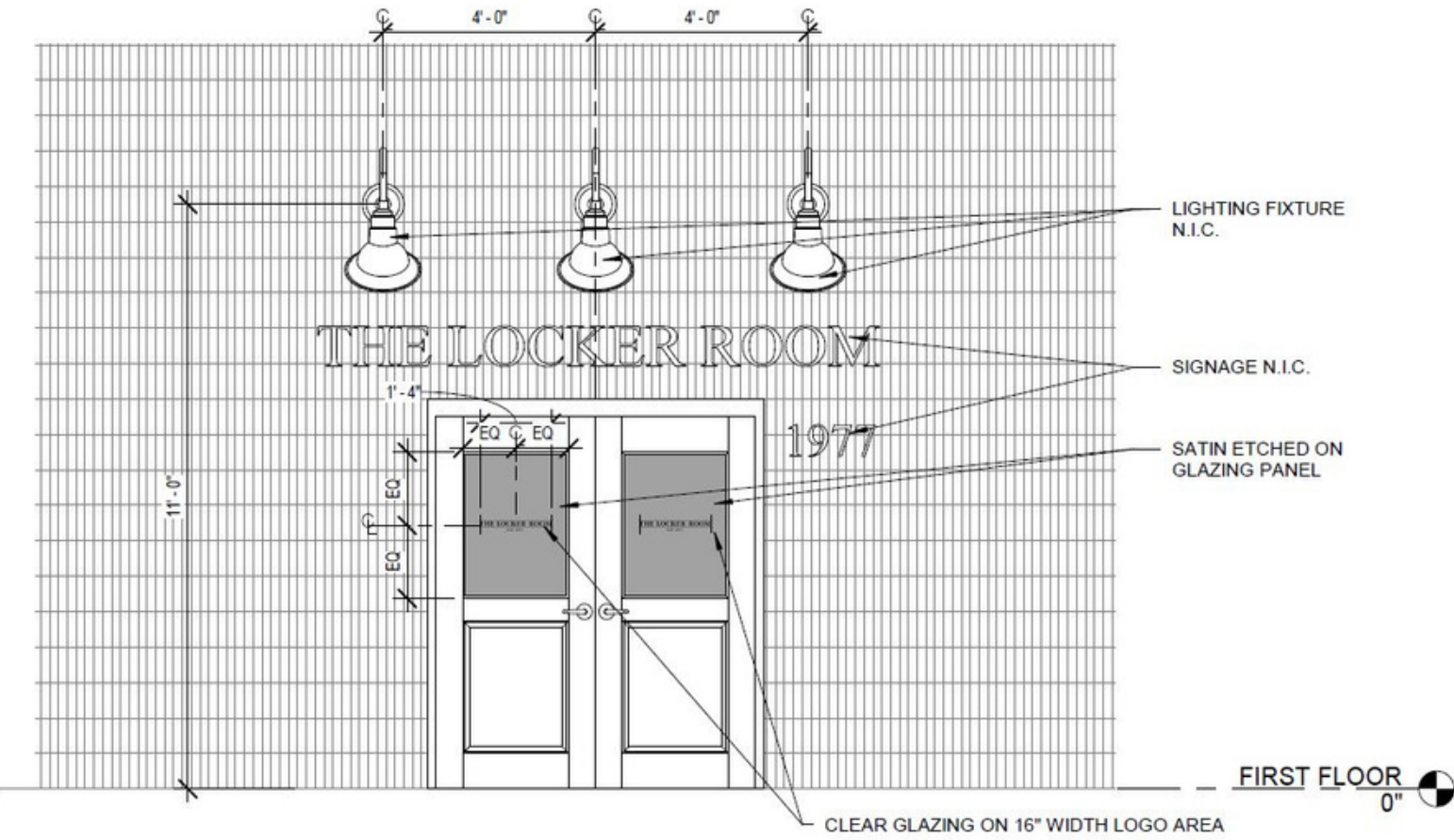
THE LOCKER ROOM

THE LOCKER ROOM

THE LOCKER ROOM

1997

VIP SPACE ENTRANCE - APPROVED ELEVATION



① MAIN ENTRY ELEVATION
3/8" = 1'-0"



VIP SPACE ENTRANCE



VIP SPACE ENTRANCE - APPROVED SIGNAGE

"THE LOCKER ROOM" DIMENSION LETTERING

SIZE: 145" W X 9" H

(OVERALL FOOTPRINT SIZE)

- LETTER HEIGHT: 9"

- LETTER THICKNESS: 3"

- COLOR: WHITE

- STOCK: PVC BASE WITH
WHITE ACRYLIC FACE

- LETTERS TO BE ALL WHITE IN TIMES NEW ROMAN FONT

- FINISHING DETAILS: CONTOUR-CUT PVC FOAM AND ACRYLIC LETTERING, MOUNT ACRYLIC
TO FACE OF EACH

- INSTALLATION PATTERN INCLUDED

@ \$940.17

"1977"

DESCRIPTION: "1977" FLAT CUT METAL

SIZE: 18" W X 6.5" H

(OVERALL FOOTPRINT SIZE)

- NUMBER HEIGHT: 6.5"

- NUMBER THICKNESS: 1/46"

- COLOR: BRONZE

- INSTALLATION PATTERN
INCLUDED

@ \$293.639

IQTY - ONSITE

INSTALLATION AT MGCC @ \$275

TURNAROUND IS

10-14 WORKDAYS FOR LETTERS TO ARRIVE, AND WITHIN THAT FOLLOWING WEEK FOR US TO
GET OUT TO INSTALL.

A PROOF IS

ATTACHED SHOWING THE FONT, AND HOW THE TWO SIZES OF LETTERS COMPARE IN RELATION
TO EACH OTHER.

THE LOCKER ROOM

1977

EXTERIOR SIGNAGE LOCATION

LOOKING TO INCORPORATE MURAL OR GRAPHICS/ SIGNAGE ALONG OUTDOOR VIP SPACE MAIN ENTRANCE

NOTES:

ILLUSTRATIVE INK TO CREATE ARTWORK FOR THIS AREA.

DESIGN IDEAS ARE AS FOLLOWS:

+ INCORPORATE VENUE "CROWD" SILHOUETTE AS BOTTOM OF MAIN WALL (FLANKING THE ENTRANCE DOORS)

+ HAVE UPPER AREAS FADE TO GREY BACKGROUND (OR ANOTHER COLOR)

+ HAVE "THE LOCKER ROOM" LOGO, IN WHITE - AS ENTRANCE IDENTIFIER ABOVE DOORS



Illustrative Ink
18444 Blaylock Rd, Saucier, MS, 39574
sales@illustrativeink.com
(228) 354-9558
EIN #: 45-3910307
www.illustrativeink.com



Quote 4941
entrance door wrap

SALES REP INFO

QUOTE DATE
09/28/2020
QUOTE EXPIRY DATE
10/28/2020
TERMS
Net 15

ORDERED BY
MS Coast Coliseum and Convention center

CONTACT INFO
Katie Hensarling
khensarling@mscoastcoliseum.com

#	ITEM	QTY	UOM	U PRICE	TOTAL (EXCL TAX)
1	roll to roll printing Width: 328 inches Height: 132 inches 3M® U40C Calendered Vinyl 3 Mil Gloss Vinyl With Comply/Air Egress	1	Each	\$3,290.00	\$3,290.00

MICHELLE'S IMAGES FOR DESIGN INSPIRATION:



Subtotal: \$3,290.00
Sales Tax (7%): \$230.30
Total: \$3,520.30

Downpayment (50.0 %)

\$1,760.15

***DESIGN PROCESS HAS BEGUN WITH ILLUSTRATIVE INK - PARTNER SELECTED SIGNAGE VENDOR*
MICHELLE TO MANAGE PROJECT, PLACE ORDER & BILL LEVY FOR THE COST**

EXTERIOR ENTRANCE AWNING



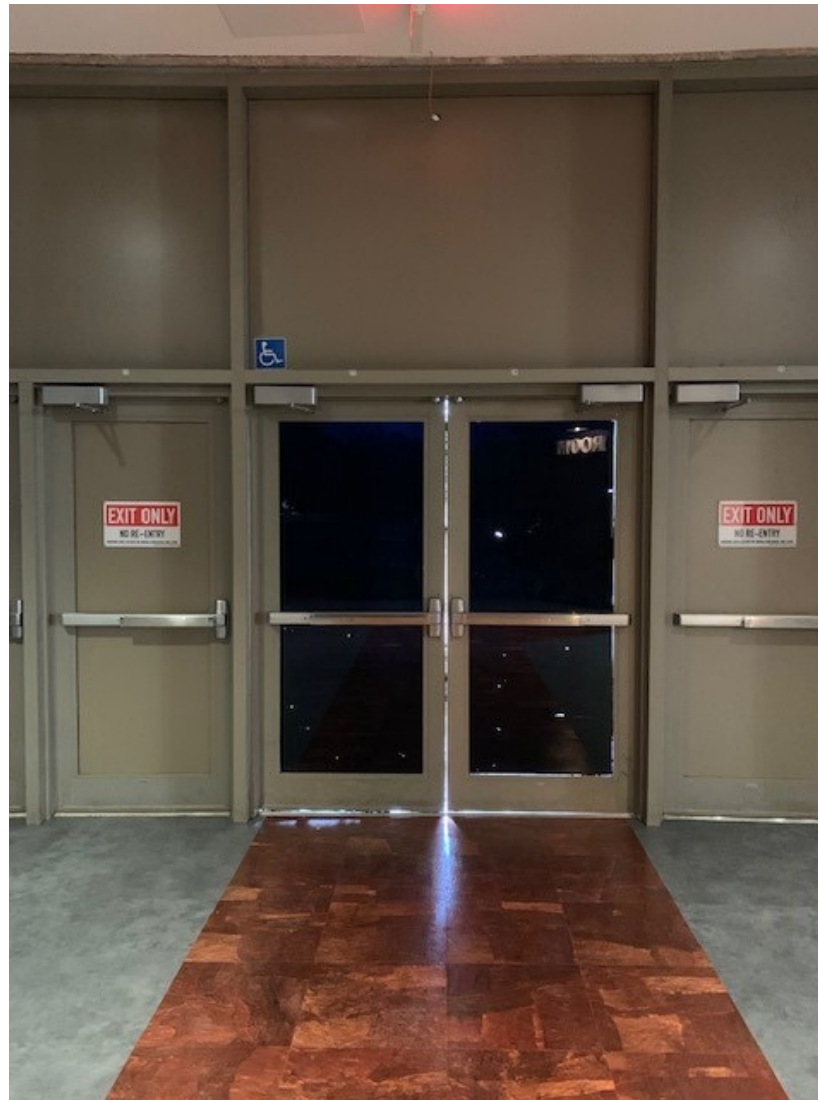
***DESIGN PROCESS HAS BEGUN WITH ILLUSTRATIVE INK - PARTNER SELECTED SIGNAGE VENDOR*
MICHELLE TO MANAGE PROJECT, PLACE ORDER & BILL LEVY FOR THE COST**

EXTERIOR SIGNAGE LOCATION- INTERIOR OF DOORS

NOTES:

ILLUSTRATIVE INK TO CREATE ARTWORK FOR THIS AREA.

SMALLER WRAP ON THE INTERIOR OF THE DOORS AS GUESTS ARE LEAVING. "SEE YOU NEXT SHOW" – SOMETHING ALONG THOSE LINES



***DESIGN PROCESS HAS BEGUN WITH ILLUSTRATIVE INK - PARTNER SELECTED SIGNAGE VENDOR*
MICHELLE TO MANAGE PROJECT, PLACE ORDER & BILL LEVY FOR THE COST**

CUSTOM SIGNAGE LOCATION

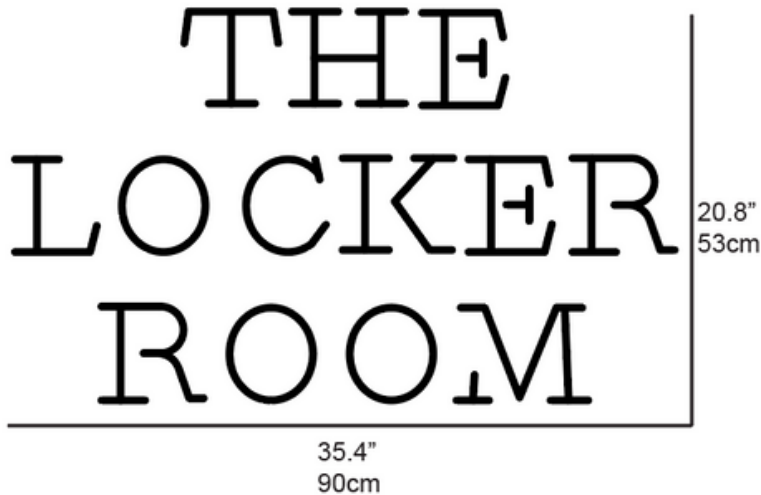
NOTES:
WHITE LIGHT, LED LIT "NEON SIGN"
THAT SAYS:
"THE LOCKER ROOM"

PLACED ON WALL BETWEEN RESTROOMS

ARCHITECT IS ADDING ELECTRIC TO THIS
AREA

MICHELLE TO SOURCE VENDOR/
PLACE ORDER

MICHELLE TO BILL LEVY FOR COST



TAX INVOICE

MS Coast Coliseum Commission



Invoice Date
28 Sep 2020

Custom Neon Pty Ltd
Office 8, 1 Rutland st
NEWTOWN VIC 3220
AUSTRALIA

Invoice Number
INV-5613

Reference
THE LOCKER ROOM -
Rach

ABN
26 630 270 165

Description	Quantity	Unit Price	GST	Amount USD
USA Sales: LED NEON SIGN - "THE LOCKER ROOM" SIZE: 35.4" (90cm) L x 20.8" (53cm) H COLOUR: White NEON: 8mm LED neon tubing ACRYLIC: Cut to Letter REMOTE & DIMMER: Yes INDOOR/OUTDOOR: Indoor PLUG: USA/Canada ADDITIONAL INFO: + Wall Mount Kit CUSTOMER NAME: MS Coast Coliseum Commission - Michelle	1.00	515.00	GST Free	515.00
USA Cut Letter to Acrylic	1.00	89.00	GST Free	89.00
USA Mounting Kit	1.00	19.50	GST Free	19.50
USA Sales: SHIP TO ADDRESS: MS Coast Coliseum Commission 2350 Beach Blvd, Biloxi, MS. 39564, USA CELL PHONE NUMBER: 228-594-3718 DELIVERY TO CUSTOMER: Any time within 3 - 6 weeks from customers design approval (we will email you tracking)	1.00	45.00	GST Free	45.00
			Subtotal	668.50
			TOTAL USD	668.50
			Add credit card processing fee	11.70
			Less Amount Paid	680.20
			AMOUNT DUE USD	0.00

IT EQUIPMENT

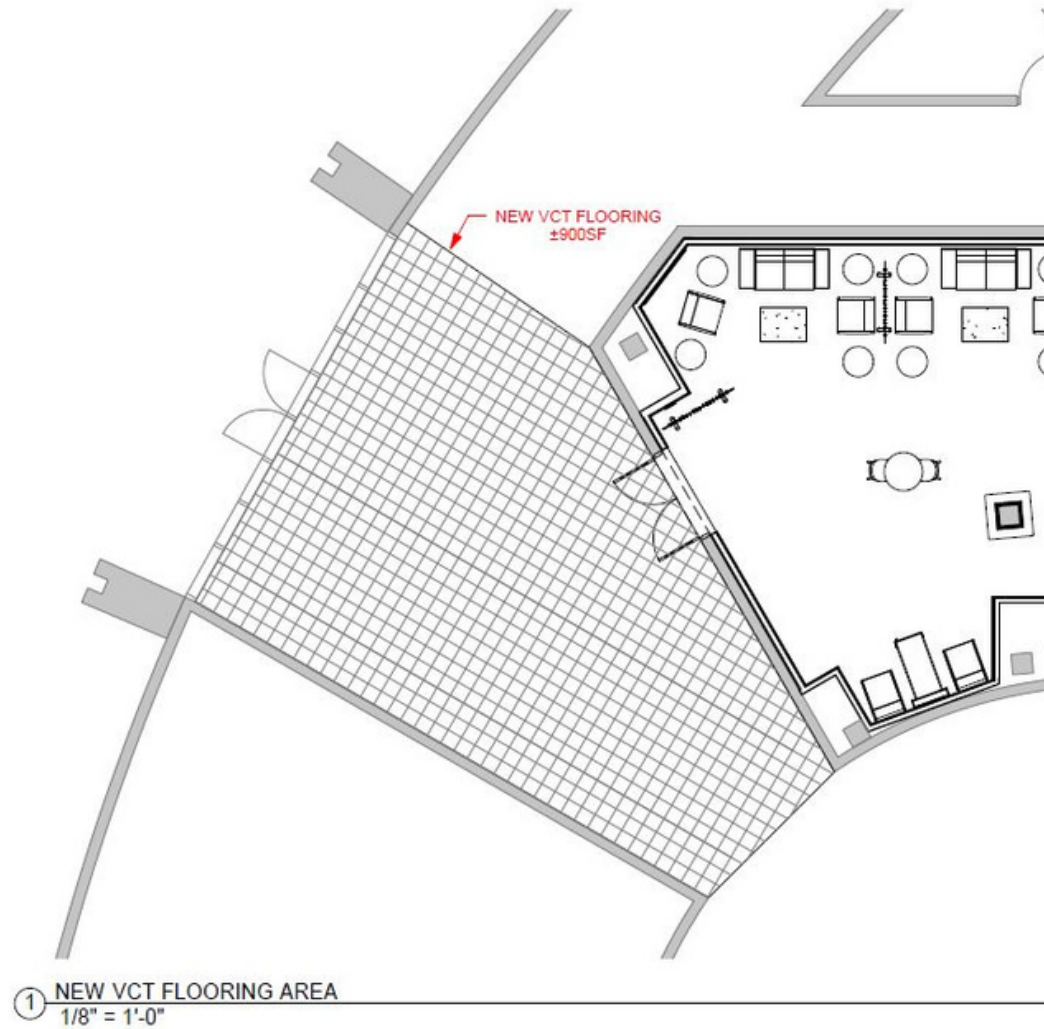
CURRENT SUGGESTION & REQUEST LIST PROVIDED BY BUILDING PARTNER'S IN-HOUSE IT

VIP Room - Audio/Video IT Order List				
Quantity	Name	Description	Unit Price	Total
1	Netgear GS748Tv5	48-Port Smart Managed Switch	\$329.99	\$329.99
1	TRENDnet TC-P48C6	48-Port Patch Panel	\$69.99	\$69.99
1	Cat5e Ethernet Cable	1000ft Plenum Black	\$147.99	\$147.99
2	Aruba AP22	Instant On Dual-Band Access Point Wi-Fi 6	\$164.99	\$329.98
4	Advidia A-46-FW	4MP Network Dome Camera	\$312.00	\$1,248.00
1	Apple iPad Mini	64GB Wi-Fi Only Space Gray	\$399.00	\$399.00
2	Sonos Arc	Soundbar - Black	\$799.00	\$1,598.00
4	Sonos One SL	Wireless Speaker - Black	\$179.00	\$716.00
1	Sonos INCLGWW1	In-Ceiling Speakers - (Pair)	\$599.00	\$599.00
1	Sonos Amp AMPG1US1BLK	2.1 Channel 250W Power Amplifier	\$649.00	\$649.00
1	Sonos Port	Audio Streamer	\$449.00	\$449.00
2	Sonos S1WMPWW1BLK	Wall Mount for One SL - (Black, Pair)	\$99.00	\$198.00
2	Sonos ARCWMWW1BLK	Wall Mount for Arc - Black	\$79.00	\$158.00
4	Sonos PCS1SUS1	Short Power Cable for One SL - Black	\$19.99	\$79.96
2	Samsung 85" Smart TV	Samsung - 85" Class 8 Series LED 4K UHD Smart Tizen TV	\$1,999.99	\$3,999.98
2	85" TV Mount	Sanus - Elite Series Full Motion TV Wall Mount For Most 40" - 95" LCD TVs - Black	\$419.99	\$839.98
5	Samsung 65" Smart TV	Samsung - 65" Class 8 Series LED 4K UHD Smart Tizen TV	\$699.99	\$3,499.95
5	65" TV Mount	Sanus - Elite Series Advanced Tilt TV Wall Mount For Most 46" - 95" TVs - Extends 5.9" - Black	\$199.99	\$999.95
7	HDMI Cable	Insignia™ - 4' 4K Ultra HD HDMI Cable - Black	\$17.99	\$125.93
				\$16,311.77

**BUILDING PARTNER'S ON-SITE IT DEPARTMENT TO MANAGE AV PROJECT
MICHELLE/ BRYAN TO PLACE AV ORDER AND BILL LEVY FOR ALL COSTS ASSOCIATED WITH EQUIPMENT AND INSTALLATION**

FLOORING - ENTRANCE TO VIP SPACE

FLOORING FOR EXTERIOR AREA OUTSIDE OF VIP SPACE ENTRANCE



**MICHELLE TO MANAGE PROJECT: SOURCE & WORK DIRECTLY WITH VENDOR ON ORDER PLACEMENT AND INSTALLATION
MICHELLE TO BILL LEVY FOR COST**

FLOORING - ENTRANCE TO VIP SPACE

Priority Construction LLC; DBA Symmetry Flooring – SLDBE and LAUCP certified – Contractor's License # 66702

October 27th, 2020

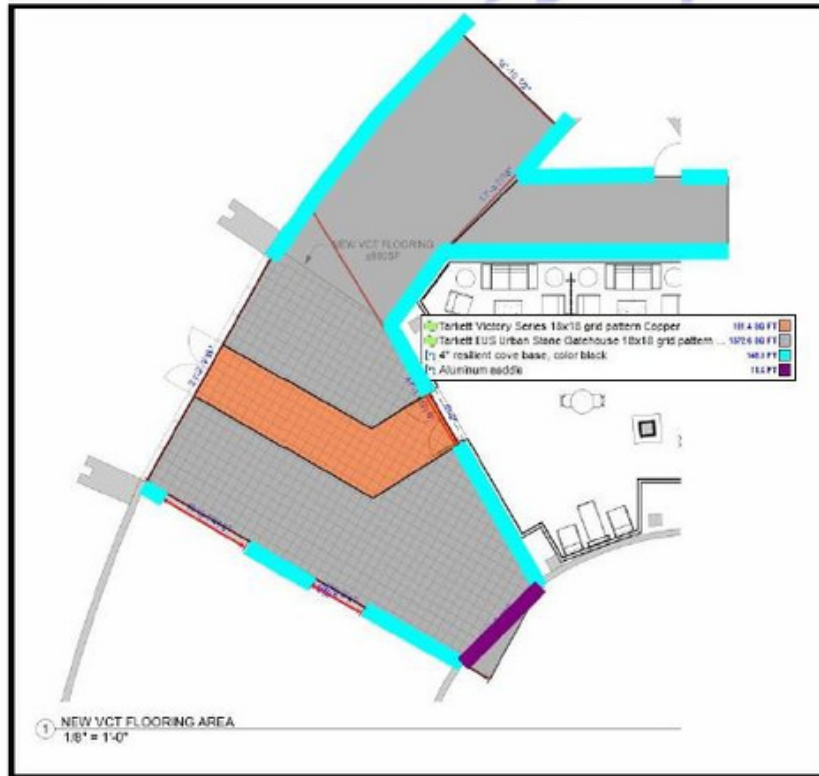
ESTIMATE
Quote #: S200927

Coliseum VIP Entry

We offer the following furnished & installed proposal for the above-referenced project. Thank you for the opportunity.

Tarkett Luxury Vinyl Tile (LVT):

- Existing VCT flooring will be torn up and removed to owner-provided dumpster.
- VCT adhesive will be razor-scraped from slab to allow for new LVT to be installed without encapsulation or skimming.
- 2 colors of LVT will be furnished and installed, totaling approximately 1,612 sf. The accent color will be installed in a straight band from outer door to VIP lounge door, with a single angle change.
- LVT included is Tarkett's EUS Urban Stone 18x18, with an accent band in Tarkett's Victory series 18x18 color Copper.
- An aluminum saddle threshold will be furnished and installed where LVT meets concrete inside coliseum to protect the edge of the new flooring.
- All walls will receive Johnsonite 4" resilient cove base in color black.
 - Base bid Total: \$ 15,793.00 (tax exempt)



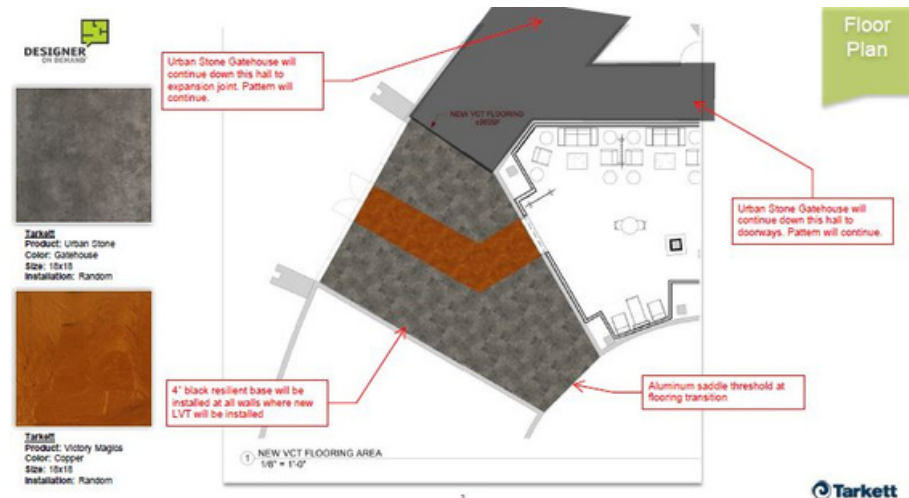
Priority Construction LLC; DBA Symmetry Flooring – SLDBE and LAUCP certified – Contractor's License # 66702

Exclusions, inclusions, clarifications, and unit pricing:

- Cleaning and protection are excluded.
- PH testing, moisture testing, or moisture mitigation are excluded unless expressly included above.
- Construction work may create dust. Symmetry is not responsible for cleaning beyond normal dust control measures.
- Services to be provided to Symmetry at no cost if needed: forklift for materials delivery, dumpster, electricity, proper lighting, HEAT (when below 55° F), and ventilation.
- Warranty on most flooring systems void when installed without permanent temperature control
- UNIT PRICING:** Skimming/Patching as needed at \$55.00 per unit (10 lb bag)
- Labor Based on 8 hour shifts Monday-Friday
- Pricing good for 60 days from date of this Proposal.

Thank you for the opportunity.

Priority Construction, LLC *doing business as* Symmetry Flooring
3217 Florida Ave, Suite C
Kenner, LA 70065



FLOORING - ENTRANCE TO VIP SPACE

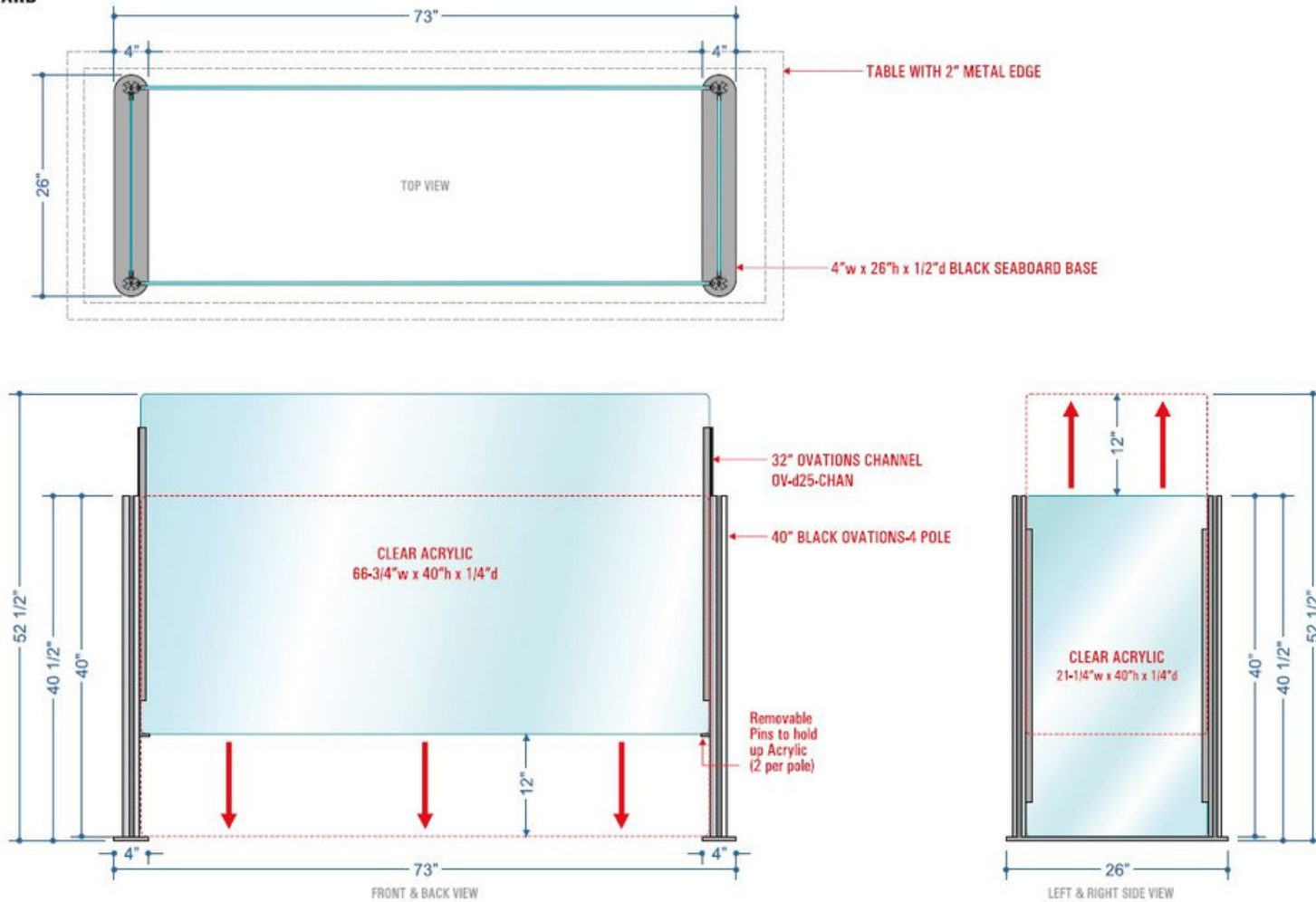


CHEF TABLE SNEEZE GUARDS

CUSTOM CHEF TABLE SNEEZE GUARDS THROUGH VGS

FOUR SIDED FREESTANDING CHEF'S TABLE SNEEZE GUARD

W/ SLIDING ACRYLIC PANELS
TO PROVIDE 12" PASS THROUGH



Scale - 1:12

Page 1 of 2



330 Washington Ave
Carlstadt, NJ 07072

1 800 203 0301
1 201 528 0890

e info@vgs-inc.com
www.vgs-online.com

This drawing and the design, ideas, and concepts expressed herein are the sole property of Functional Ergo, a Division of Visual Graphic Systems, Inc. The information contained on this drawing is confidential and may not be shared or distributed in any way or be used other than as intended for this project.
©2019 VGS Inc. All rights reserved. Products incorporating Avonmark® CounterTop®, Avonmark® Stand-Off®, Avonmark® WallTop®, Avonmark® BackWall®, Avonmark® and VGS® Mapicon® Technology are subject to the terms of the Avonmark® License Agreement, LSA-19-001-001, LSA-19-001-002, LSA-19-001-003, LSA-19-001-004, LSA-19-001-005, LSA-19-001-006 and LSA-19-001-007. VGS and other future and items brand designs are further subject to design, copyright and trademark protection as well as other worldwide pending patents.

Client Name: Compass - Levy
Project Name: Chef's Table Sneeze Guard - Unit 045387
Drawing Number: 20-421616 v2

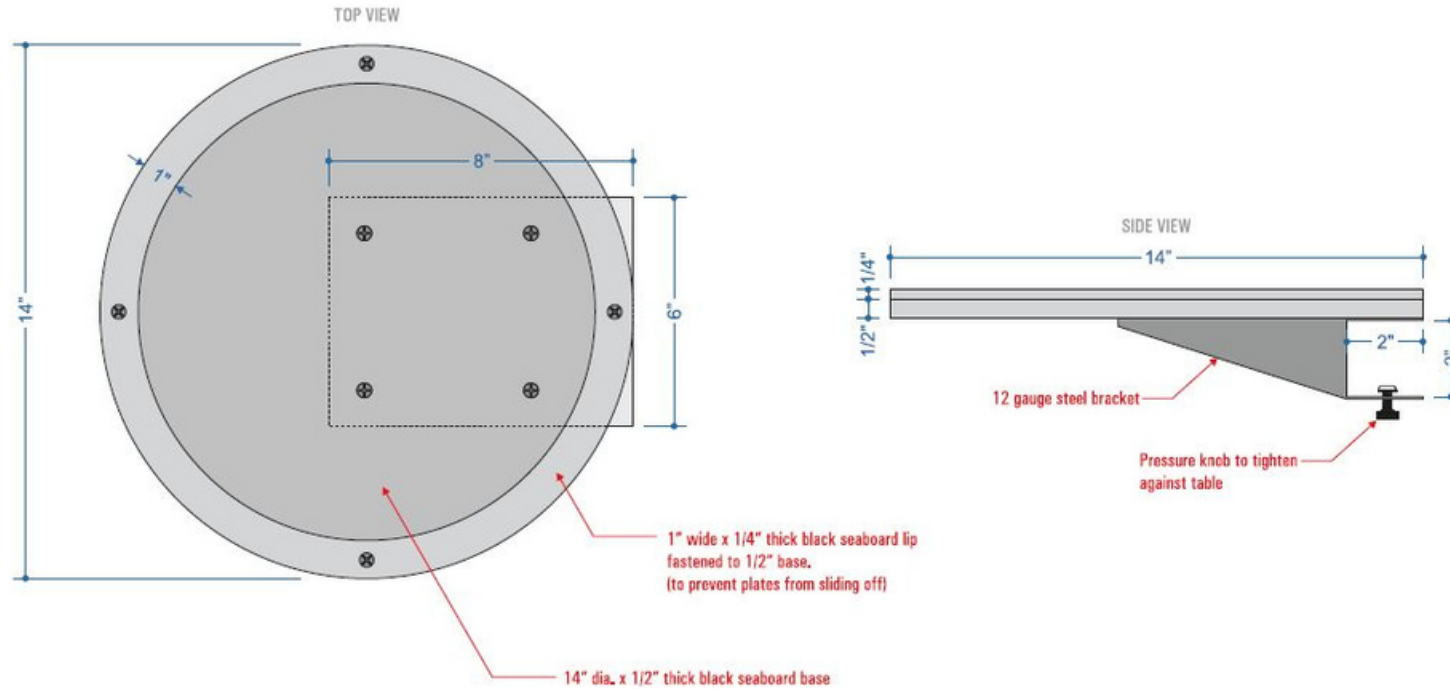
Date Created: 10,13,20
Created By: JPM
Revised By:

CONFIGURED FOR DOUBLE SIDED AND SINGLE SIDED SERVICE (ATTENDED FOR NOW, SELF-SERVICE FOR LATER - WHEN PERMITTED)

CHEF TABLE SNEEZE GUARDS - PLATE HOLDER ADAPTER

VENDOR: VGS

CHEF'S TABLE PLATE HOLDERS



Scale - 1:3

Page 2 of 2



VGS

330 Washington Ave
Carlstadt, NJ 07072

t 800 203 0301
f 201 528 0890

e info@vgs-inc.com
www.vgs-online.com

This drawing and all the design, ideas, and concepts expressed herein are the sole property of Frostbite Corp., a Division of Visual Graphic Systems, Inc. The information contained on this drawing is confidential and may not be shared or distributed in any way or be used other than as intended for this project.
©2013 VGS® All Rights Reserved. Products incorporating American® CounterSupport®, American® Standoffs®, American® Sneeze Guards®, American® Sneeze Guards® and VGS® Magnetic Sneeze Guards are subject to any terms of the following patents: US 8,400,886; US 8,298,597; CN 2,284,026; US 8,920,664; US 8,133,228; US 8,484,486; US 8,113,014; US 8,482,043; US 8,482,043 and US 8,482,043. VGS® Sneeze Guards and other brand design are further subject to design copyright and trademark protection as well as other worldwide pending patents.

Client Name: Compass - Levy

Project Name: Chef's Table Sneeze Guard - Unit 045387

Drawing Number: 20-421616 v2

Date Created: 10/13/20

Created By: JPM

Revised By:

INTENDED FOR ATTENDED SERVICE USE

CHEF TABLE SNEEZE GUARDS - ASSEMBLY INSTRUCTIONS

VENDOR: VGS



Levy Shield Assembly



1- Place end panels on the ground then
Insert front and back panels into end units
from the top as shown



2- black metal stability piece on the edge
Stays at the top of the unit.

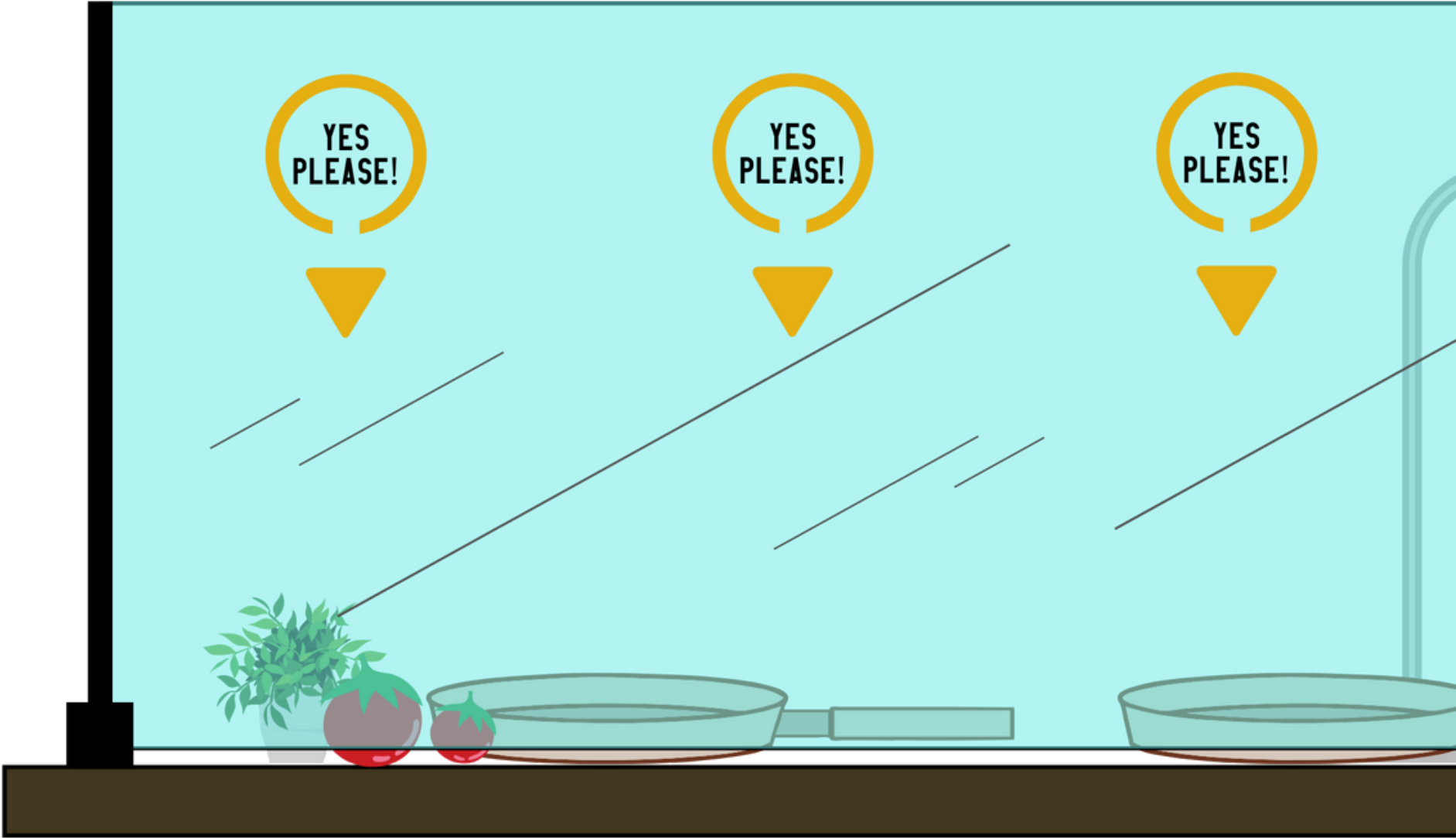


3- the poles have a screw on stopper
To hold the panel and allow access.

You will need 2 people to assemble this unit on the floor then lift on to the table

CHEF TABLE SNEEZE GUARDS - COMMUNICATION CLINGS

VENDOR: VGS



CHEF TABLE SNEEZE GUARDS - INVOICE

VENDOR: VGS



Page 1 of 2 Pages

Compass
Steven Vining

Quote # RA20-8669451

Date: 10/13/20

Phone:
Fax:
Email: svining@Levyrestaurants.com

Quoted by: Rachael Adriano
radriano@vgs-inc.com

Project: MCC_Chef Table_v2

Item	Quantity	Description	Unit Price	Extension
		Chefs Tables - 4 Sided		
	2	4 Sided Che's Tables Guards	\$1,415.00	\$2,830.00
	2	Set of plate holders (2 per set)	\$220.00	\$440.00
		Window Clings		
	25	CC Item #56, white "Yes Please" static window cling	\$3.30	\$82.50
Sub-total				\$3,352.50
Tax <i>If applicable</i>				
Total				\$3,352.50

UNIFORMS



12325 Kerran Street
 Poway, CA 92064
 Phone: 800-372-6621 Fax: 858-643-5624
 Email: orders@chefworks.com

COST CENTER
 45386

Date	Page
Oct 3, 2020	1
Invoice Number	
IN2307285	

Chef Works prides itself on providing unrivaled product quality and innovation. Chef Works will accept most returns on items that have not been worn, embroidered, altered, laundered or otherwise damaged within 30 days of the purchase date.

Please note that Chef Works cannot accept returns on products considered Personal Protection Equipment (PPE) including, but not limited to, the SKILD Series™ face coverings.

Sold To:

Levy Mississippi Coast
 Levy Mississippi Coast
 2350 Beach Blvd
 Biloxi, MS 39531
 USA

Ship To:

Levy Mississippi Coast
 2350 Beach Blvd
 BILOXI, MS 39531-4914
 US

Order No.	Order Date	Customer No.	Salesperson	PO Number	Ship Via	Terms
LVF400130	Sep 30, 2020	520489	ANN	LCI-	UPSSGR	5COMI

Qty. Ord.	Qty. Shp.	Qty. B/O	Item Number	Description	Unit Price	Extended Price
			IN3G	UPS - Third Party Standard (Ground option)	0	0
20	20	0.00	ALWXX022-BSL-0	APRON-URB-BISTRO-CORVALLIS /BLACK/STEEL GRE /0	18.01	360.20
5	5	0.00	BCLZ008-BLK-XL	COAT-ESS-MDN-HARTFORD-L/S /BLACK /XL	37.90	189.50
5	5	0.00	BCLZ008-BLK-L	COAT-ESS-MDN-HARTFORD-L/S /BLACK /LARGE	37.90	189.50
5	5	0.00	BCLZ008-BLK-M	COAT-ESS-MDN-HARTFORD-L/S /BLACK /MEDIU	37.90	189.50
5	5	0.00	BCLZ008-BLK-S	COAT-ESS-MDN-HARTFORD-L/S /BLACK /SMALL	37.90	189.50
2	2	0.00	BCLZ008-GRY-2XL	COAT-ESS-MDN-HARTFORD-L/S /GREY /2XL	51.18	102.36
2	2	0.00	BCLZ008-GRY-XL	COAT-ESS-MDN-HARTFORD-L/S /GREY /XL	37.99	75.98
2	2	0.00	BCLZ008-GRY-L	COAT-ESS-MDN-HARTFORD-L/S /GREY /LARGE	37.99	75.98
2	2	0.00	BCLZ008-GRY-M	COAT-ESS-MDN-HARTFORD-L/S /GREY /MEDIU	37.99	75.98
28	28	0.00	EMBL-000-0	LOGO - STD STITCH COUNT /000 /0	4.54	127.12
76	76	0	Total Pcs Shipped:			76

Tracking Number: 1Z37X3X40321628636	Tax summary:	Subtotal	1,575.62
Comments:	STATE 110.32	Total sales tax	110.32
Please use logo 1930409 (white logo) on all jackets on the left breast	COUNTY 0.00	Total amount	1,685.94
GO PAPERLESS! For "Electronic Delivery" please send your e-mail address to AR@chefworks.com	CITY 0.00	Less payment	0.00
	COMPOSITE 0.00	Less pmt. disc	0.00
	SPECIAL 0.00	Amount due USD	1,685.94

FINISHING TOUCH ELEMENTS

THE LOCKER ROOM

DECOR SUGGESTIONS:

- + REAL OR FAUX TALL TREES (6' OR HIGHER)
- + AREA RUGS TO HELP FRAME IN LOUNGE AREAS (SUGGESTED: ORIENTAL OR CONTEMPORARY GEOMETRIC)
- + INDUSTRIAL INSPIRED FLOOR LAMPS (BRASS, BLACKENED OR SILVER FINISH)
- + ADDITIONAL GREENERY ON BAR/ COFFEE TABLES/ SIDE TABLES (AS NEEDED FOR EXTRA POP OF COLOR)
PLANT TYPE: SNAKE PLANT - GREAT FOR LOW-LIGHT AREAS (LOW MAINTENANCE)
- + MENU SIGNS/ MARKETING MATERIAL HOLDERS FOR CENTER OF EACH HIGH-TOP/ LOW-TOP TABLE
- + CENTER OF HIGH-TOP OR LOW-TOP TABLES:
 - LANTERNS WITH BATTERY VOTIVES
- + LIQUOR BOTTLE PRODUCT DISPLAY SHELVES (EITHER TABLE-TOP OR SHELVES MOUNTED TO WALLS)



VIP - THE LOCKER ROOM - BUDGET

- + GALLERY BAR ITEMS: \$34,135 - ORDER HAS BEEN PLACED (TOTAL REDUCED BY \$1,850 FOR DELAYED DELIVERY ACCOMMODATION) (HILARY)
- + CORE CONCEPTS CHEF TABLES (2) - \$6,280 - ORDER HAS BEEN PLACED (HILARY)
- + TRIMARK BAR EQUIPMENT WITH FREIGHT AND INSTALLATION- \$18,279.23 - ORDER HAS BEEN PLACED (STEVE/ HILARY)
- + TRIMARK CHEF TABLE SMALLWARES: \$10,333.49 - ORDER HAS BEEN PLACED (STEVE)
- + OFFICE ENVIRONMENTS FURNITURE ITEMS/ CUSTOM PARTITIONS & ARCADE GAMES: \$112,890.08 - ORDER HAS BEEN PLACED (HILARY)
- + IT ITEMS (MONITORS/ SOUND SYSTEM/ SECURITY CAMERAS/ ETC.): ESTIMATED AT \$16,000 (FINAL TOTAL TBD - MICHELLE/ STEVE)
- + FRAMED ART/ PLAQUES: ORDER TBD (MICHELLE)
- + MISC. DECOR ITEMS (I.E. TABLE LAMPS/ MIRRORS FOR RESTROOMS/ ETC.): TOTAL TBD (MICHELLE)
- + TRIMARK BAR SMALLWARE: \$4,673.50 - ORDER HAS BEEN PLACED (STEVE)
- + ILLUSTRATIVE INK EXTERIOR BUILDING SIGNAGE \$3,530.30 ESTIMATE BEFORE SELECTED ARTWORK - MICHELLE MANAGE AND PLACE ORDER
- + DUNAWAY INTERIOR WALL SIGNAGE: \$1,508.81 - MICHELLE TO MANAGE AND PLACE ORDER
- + INTERIOR LED LIT "NEON SIGN": \$680.20 WITH "CUSTOM NEON" VENDOR - MICHELLE TO MANAGE AND PLACE ORDER
- + MAIN BACK BAR LIQUOR BOTTLE SHELVING SYSTEMS: SOURCING/ QUOTING PROCESS NOT YET BEGUN (ESTIMATED AT \$2,000) - STEVE TO MANAGE
- + VGS SNEEZE GUARDS FOR CHEF TABLES WITH "YES PLEASE SIGNAGE": \$3,352.50 BEFORE TAX & SHIPPING - ORDER HAS BEEN PLACED (HILARY)
- + FLOORING/ RED CARPET TO ENTRANCE OF VIP SPACE: \$15,793 - MICHELLE TO MANAGE AND PLACE ORDER
- + WRISTBANDS: \$435.33 FOR 10,000 - STEVE TO MANAGE & PLACE ORDER
- + POS: 4 STATIONS FOR TOTAL AMOUNT OF \$5,500 - STEVE TO MANAGE & PLACE ORDER
- + UNIFORMS: ESTIMATED AT \$1,685.94 - STEVE TO MANAGE - ORDER PLACED
- + BLACK VELOUR CURTAINS: \$2,600 - ORDERED BY MICHELLE - WILL BE BILLED TO LEVY
- + HAND SANITIZER STANDS: \$800 - ORDERED BY MICHELLE - WILL BE BILLED TO LEVY
- + GARBAGE CANS FROM TRIMARK (10) - \$685 - STEVE TO MANAGE