



Levy Smart Fridges

BYTE SMART FRIDGE
TECHNOLOGY FOR *Levy*

Technology designed for sports,
entertainment, convention centers,
and Cultural Institutions



ABOUT

Levy Smart Fridges

Levy smart fridge technology was developed to serve a specific purpose:



Increase Sales

Minimize Labor

Empower Faster Service

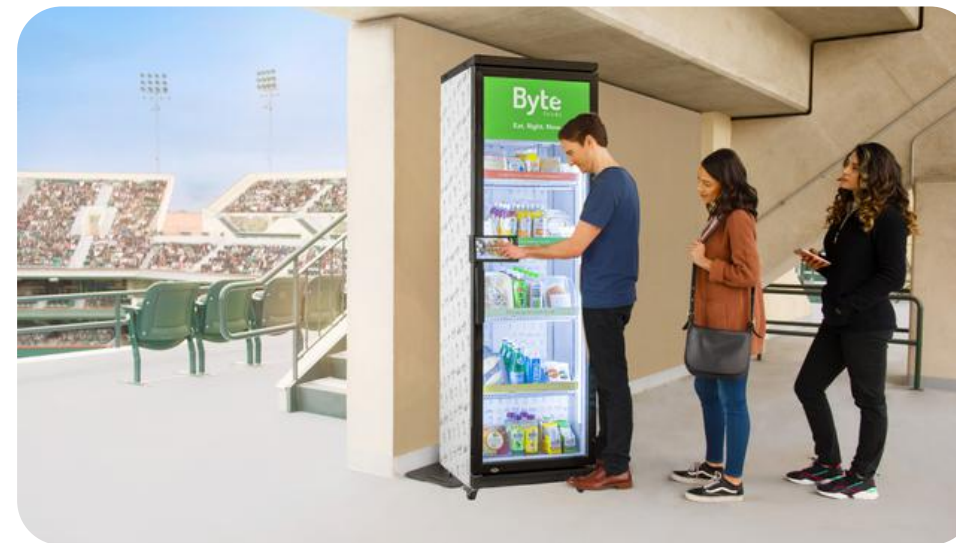
Smart fridges are a great way to delight your clients. The customer experience is the most convenient and frictionless, so fans don't miss a minute of the action.

THE VISION

Blanket a Venue with Fresh Food & Drinks



**BEFORE THE
EVENT**



**DURING THE
EVENT**



**AFTER THE
EVENT**



THE CUSTOMER EXPERIENCE

1

**TAP OR SWIPE
A CREDIT CARD**

2

**TAKE WHATEVER
YOU WANT**

3




**JUST
WALK AWAY**

LEVY SMART FRIDGES ARE THE SOLUTION

Fans and guests are demanding more convenient fresh food options. Instead of standing in line at a concession, they want to be eating in their seat while enjoying the action.

Smart fridges deliver **more convenience**, **more variety**, and **more earning potential**.

Levy fridges solve:

-  Rising wages
-  Labor shortages
-  Low cost retail buildout



SAMPLE UNIT ECONOMICS PER EVENT

EVENT REVENUE

Fridge Food Sales

\$400

Average revenue per fridge per event

EVENT COSTS

License Fee

\$3

Subscription fee broken out per event

Smart Tag Fee

\$9

\$0.15 Cost per product sold

Connectivity

\$1

Cellular service cost per event

Merchant Fees

\$18

4.5% Credit card processing fees

Food Costs

\$120

Assumes 30% food cost

Unsold Food

\$12

Unsold food is typically 10%

Total Costs

\$163

MONTHLY PROFIT

\$237

Total profit generated per event

PROFIT %

59.4%

Profit margin as a percentage of sales

ANNUAL REVENUE PER FRIDGE, PER EVENT

	50 EVENTS	75 EVENTS	100 EVENTS	150 EVENTS
REVENUE	\$20,000	\$30,000	\$40,000	\$60,000
COSTS	\$8,129	\$12,193	\$16,257	\$24,386
PROFIT	\$11,871	\$17,807	\$23,743	\$35,614

FRICITIONLESS CUSTOMER EXPERIENCE

Buying from a Levy smart fridge is easy.

Tap, swipe or insert using your:

- Credit Card
-  Apple Pay
-  Google Pay
- Student Card
- Employee Badge



Watch how it works using the QR code



Click the video to learn more

GETTING STARTED IS EASY

SCHEDULE TRAINING

Byte's team will train you on how to use the online dashboard. It's simple and only takes 30 minutes.

RECEIVE YOUR FRIDGE

Once your fridge arrives setup is easy. Just plug it in and it's ready to go. It'll automatically connect to the internet and you can start selling food immediately!

STOCK YOUR FRIDGE

Stocking your fridge couldn't be easier. The operator simply enters their individual code to unlock the door. Once the door is open you stock the fridge however they'd like. No checking-in products or data entry needed.

ORDER YOUR FRIDGE

Lead time for Levy fridges is only two weeks! This is something you can start immediately.

ORDER RFID TAGS

Byte offers one-click RFID tag ordering. Order through Byte's dashboard and you'll have them in-hand in just a few days.

PLACE YOUR FRIDGE

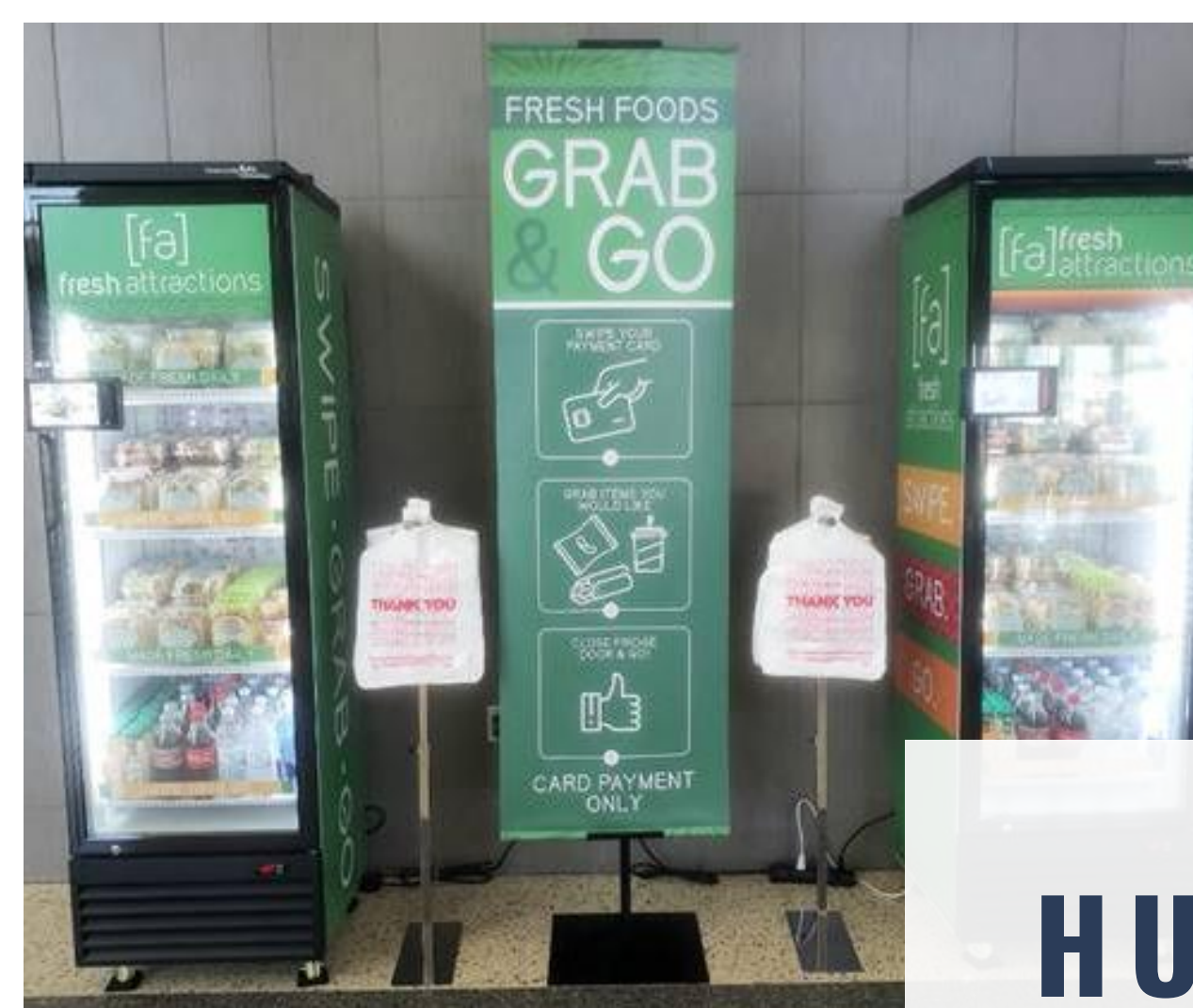
The fridge is only 160lbs and can be move anywhere. It's on wheels so you can place it in the concourse, media areas, entry/exit gates or even outside the concessions.

START MAKING SALES

Funds will automatically be collected and ACH transferred into your account.

IT'S THAT EASY!

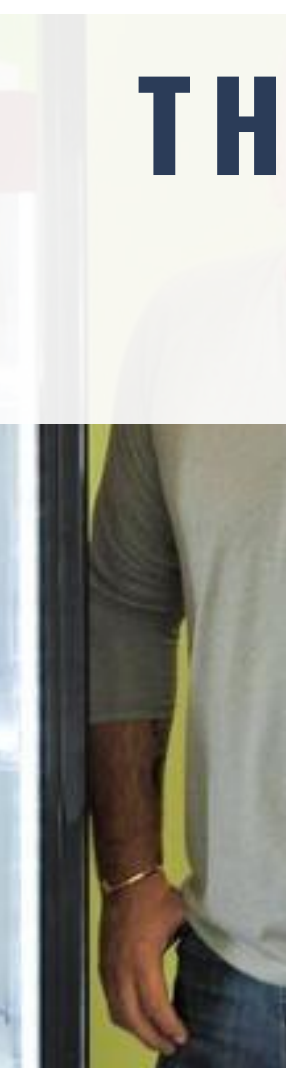




HUNDREDS OF CLIENTS

THOUSANDS OF FRIDGES

learn more at bytetechnology.co



SPECIAL *Levy* PRICING

\$4400 per kiosk

\$75 per month software license and
cellular connectivity

Credit card processing: 2.5% + \$0.20 per transaction

\$0.15 per RFID tag

INCLUDES

- 1 Year Warranty
- Byte University videos and articles
- Help Desk videos and articles
- Email Support

